

DETAILS

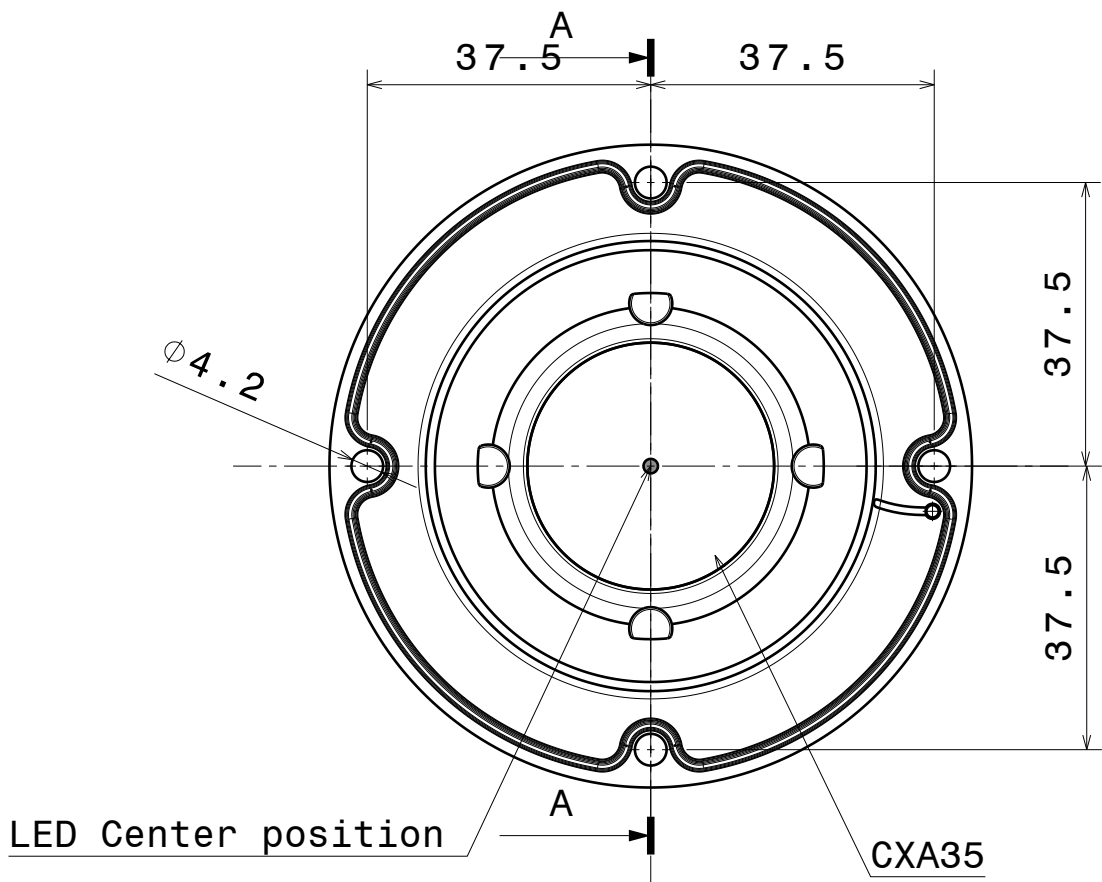
Product Number	FN15186_STELLA-HB
Family	STELLA
Type	Lens
Color	white
Diameter	90 mm
Height	19,5 mm
Style	round
Optic Material	Silicone
Holder Material	PA66GF30
Fastening	
Status	production ready
ROHS Compliant	Yes
Date Updated	4/05/2016



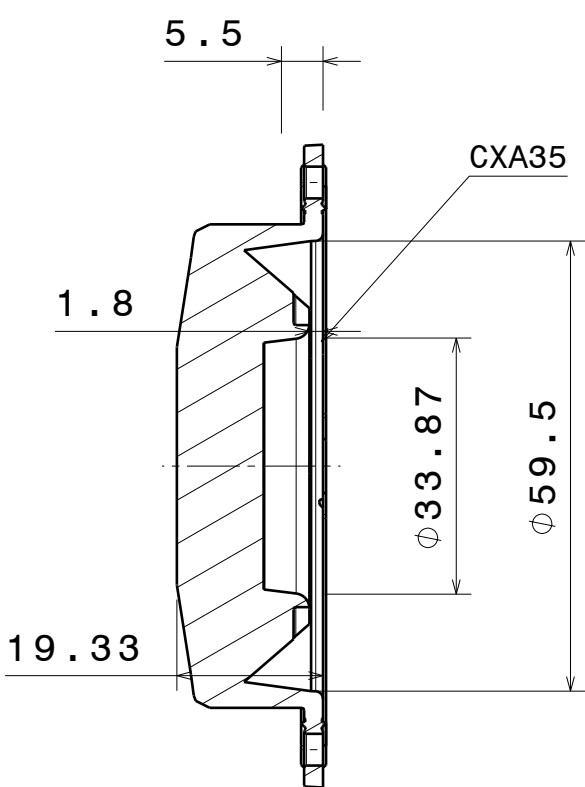
OPTICAL PROPERTIES

LED	Viewing Angle	Light Beam	Efficiency	cd/lm	Connector
CLL05x/CLU05x	sim: 66	HighBay	sim: 92 %	sim: 0.760	-
CLL05x/CLU05x	65 deg	HighBay	94 %	0.740	-
CLL04x/CLU04x	68 deg	HighBay	93 %	0.770	Bender Wirth: 431 Typ L3
CXM-22	68 deg	HighBay	94 %	0.770	Bender Wirth: 431 Typ L3
VERO29	69 deg	HighBay	94 %	0.708	-
LUXEON CoB 1211	71 deg	HighBay	93 %	0.730	-
CXA/B 3590	72 deg	HighBay	93 %	0.682	-
LUXEON CoB 1216	72 deg	HighBay	94 %	0.720	-
CLL05x/CLU05x	73 deg	HighBay	93 %	0.630	-
CXM-22	73 deg	HighBay	93 %	0.700	-
VERO18	75 deg	HighBay	93 %	0.700	-
LTPL-M074	76 deg	HighBay	93 %	0.650	-
CLL04x/CLU04x	77 deg	HighBay	94 %	0.650	-
CXA/B 30xx	78 deg	HighBay	93 %	0.630	-
CLL163	79 deg	HighBay	94 %	0.640	-
CXM-18	80 deg	HighBay	93 %	0.600	-
CXA/B 25xx	83 deg	HighBay	93 %	0.566	-
Solieri S19	84 deg	HighBay	92 %	0.570	-

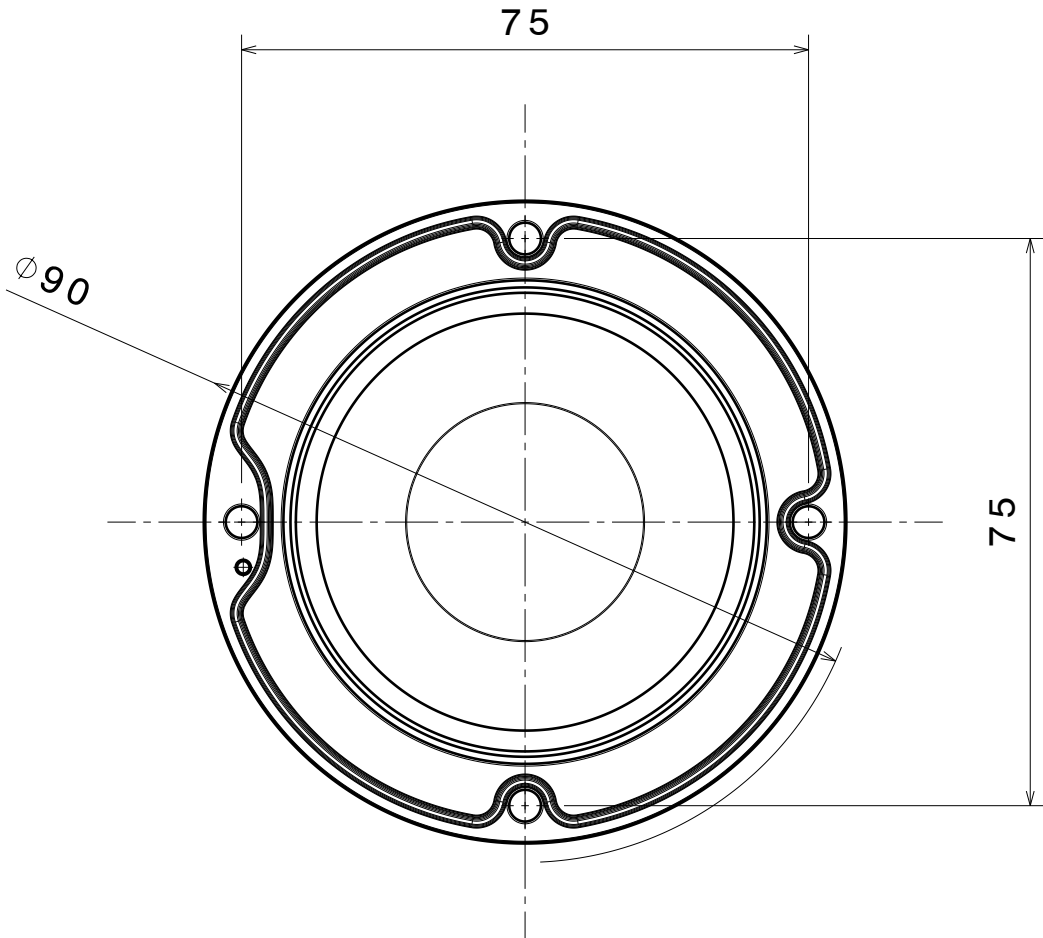
NOTE: Maximum recommended tightening torque for STELLA-FRAME-WHT is 0,4Nm



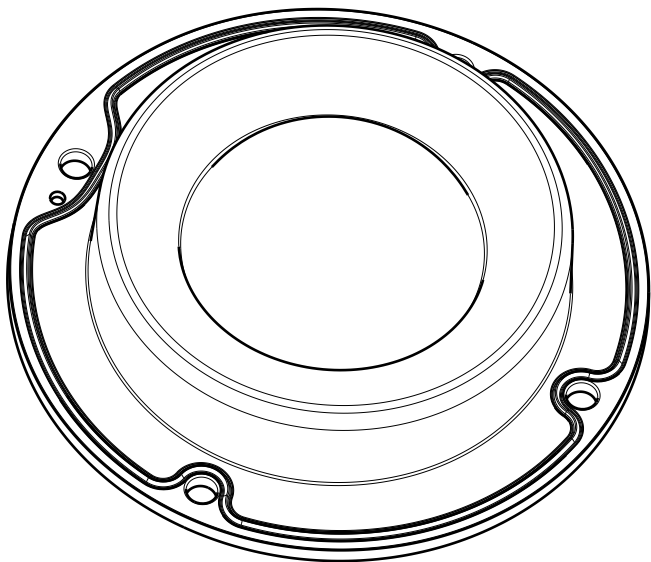
Bottom view



Section view A-A



Front view

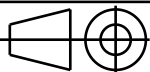


Isometric view

INDEX	PART NO	DESCRIPTION	MATERIAL	COLOUR
1	F14021	STELLA-HB	Optical grade LSR	
	F14252	STELLA-FRAME-WHT	PA66GF30	white

Tolerances if not otherwise shown
According to DIN ISO 2768-1
Linear measures: class V
Please note that due to the elasticity of
products made of silicone actual measured
values may vary, and therefore typical
tolerance values may not be applied.

THIRD ANGLE PROJECTION:



This drawing is the property
of LEDiL Oy. It may not be
reproduced, copied or
communicated without a written
agreement with LEDiL Oy."

LEDiL

Ledil Oy
Salorankatu 10
FIN 24240 SALO
Finland

DRAWING TITLE

FN15186_STELLA-HB

SIZE

A3

PART NUMBER

FN15186

SCALE

1:1

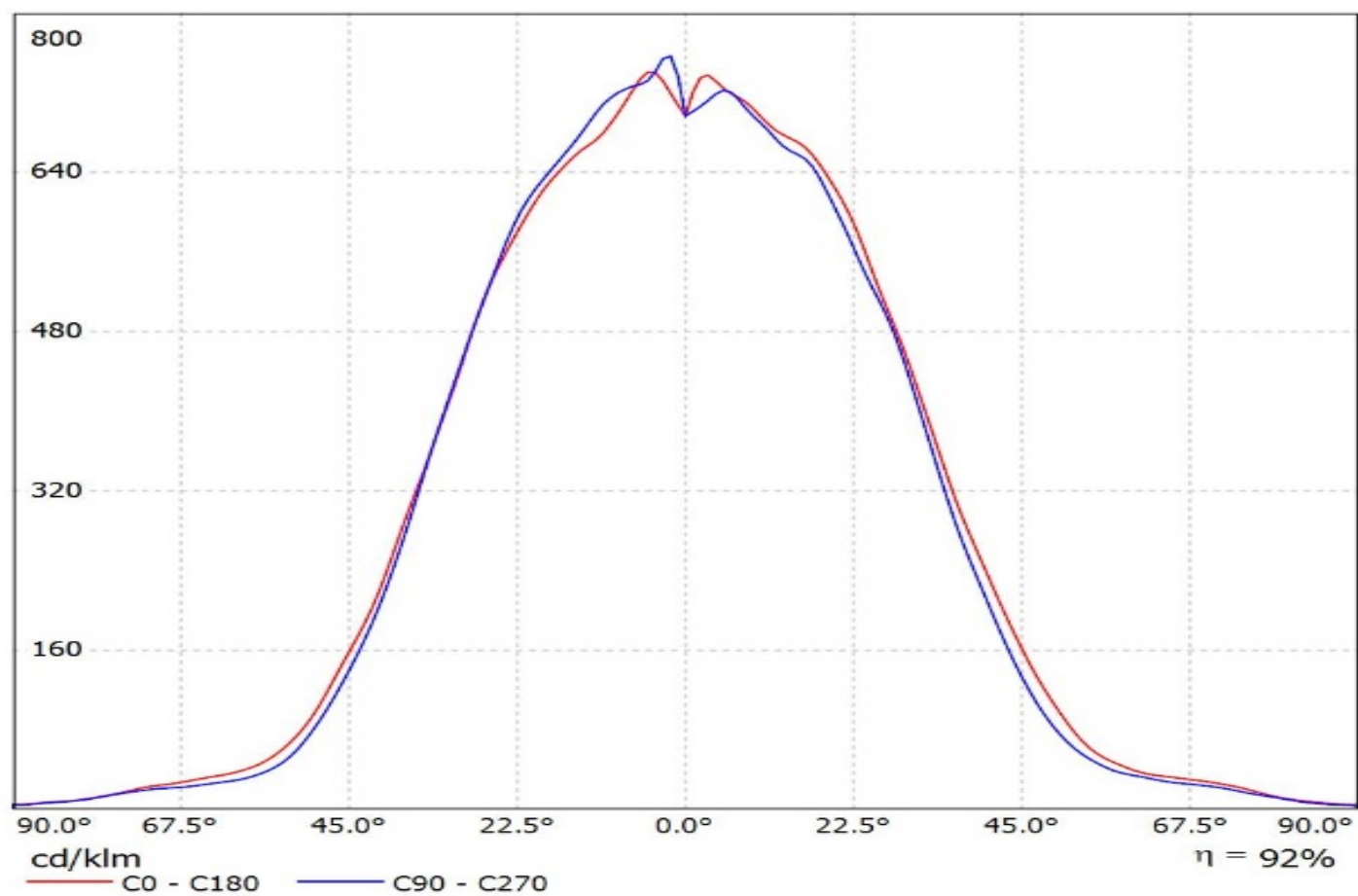
WEIGHT

56,32 g

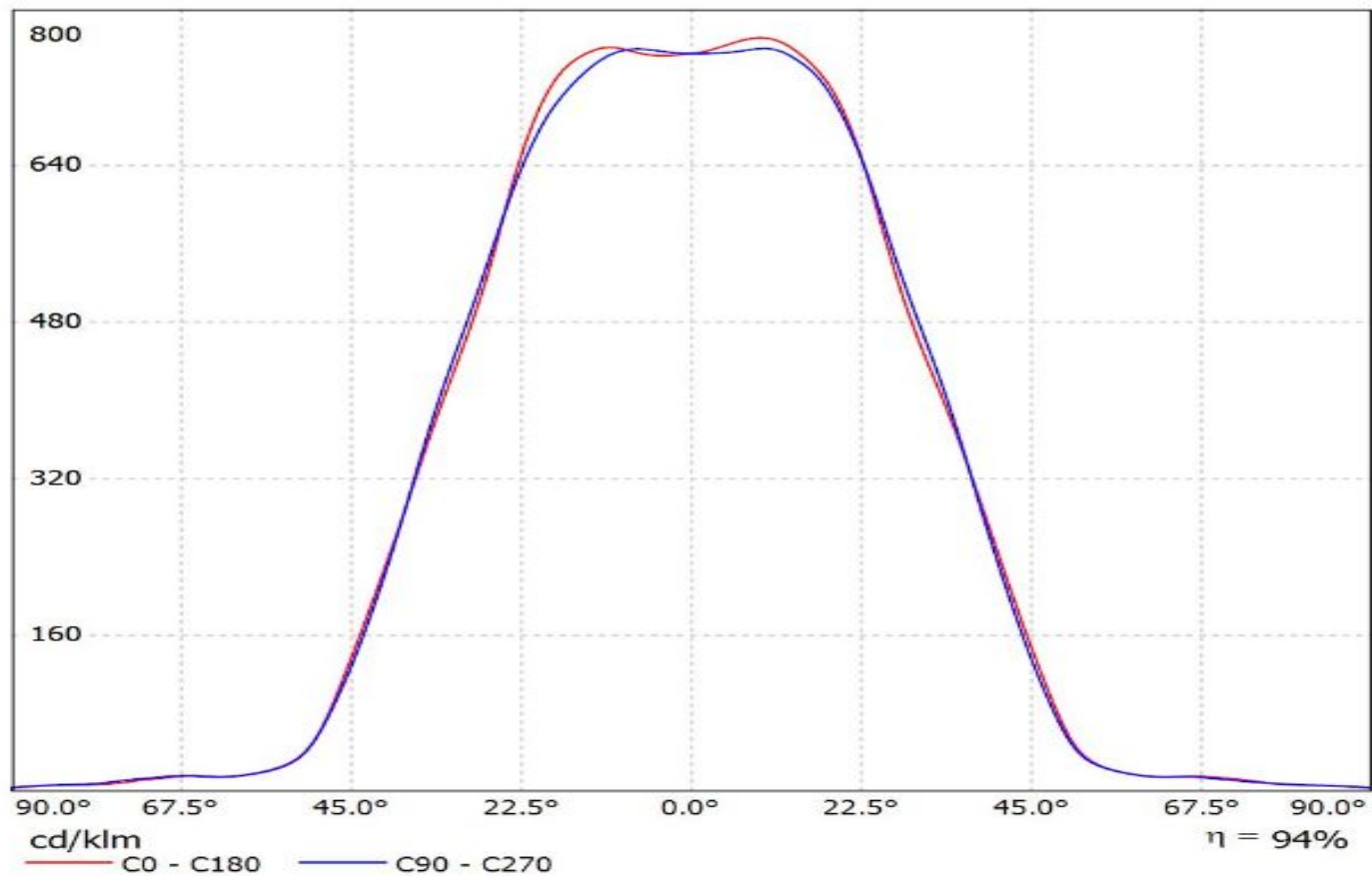
SHEET

1/1

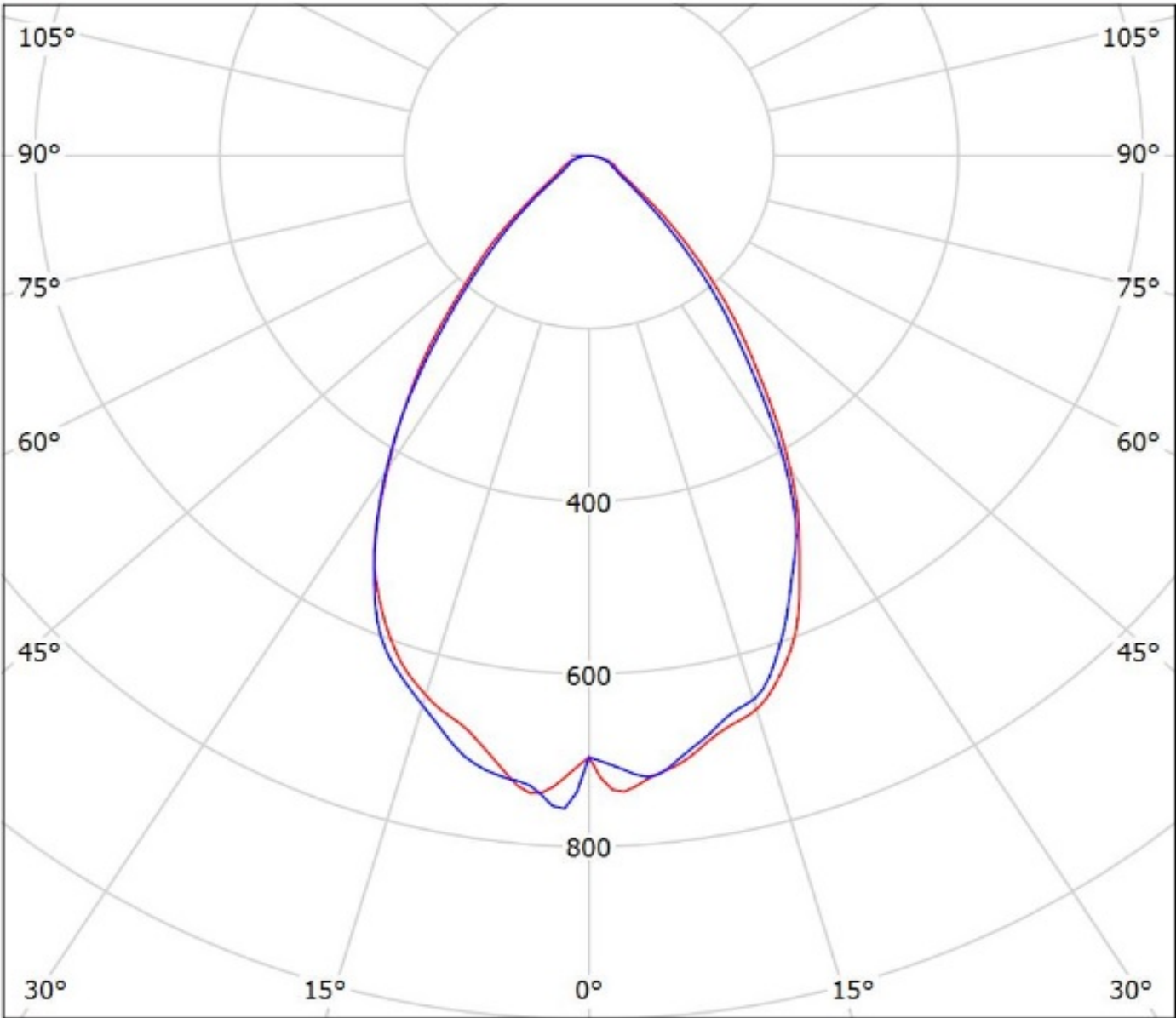
Luminaire: Ledil Oy FN15186_STELLA-HB_(CLU056)_SIMULATED
Lamps: 1 x Citizen CLU056 (CLU056-3618C1-303M2G2)



Luminaire: Ledil FN15186_STELLA-HB_(CXM-22_+BW)
Lamps: 1 x LUMINUS_CXM-
22_+Bender&Wirth_431TypL3_1259.61lm@250mA_P=8.0332W_CCT=3000K_I=0.25A



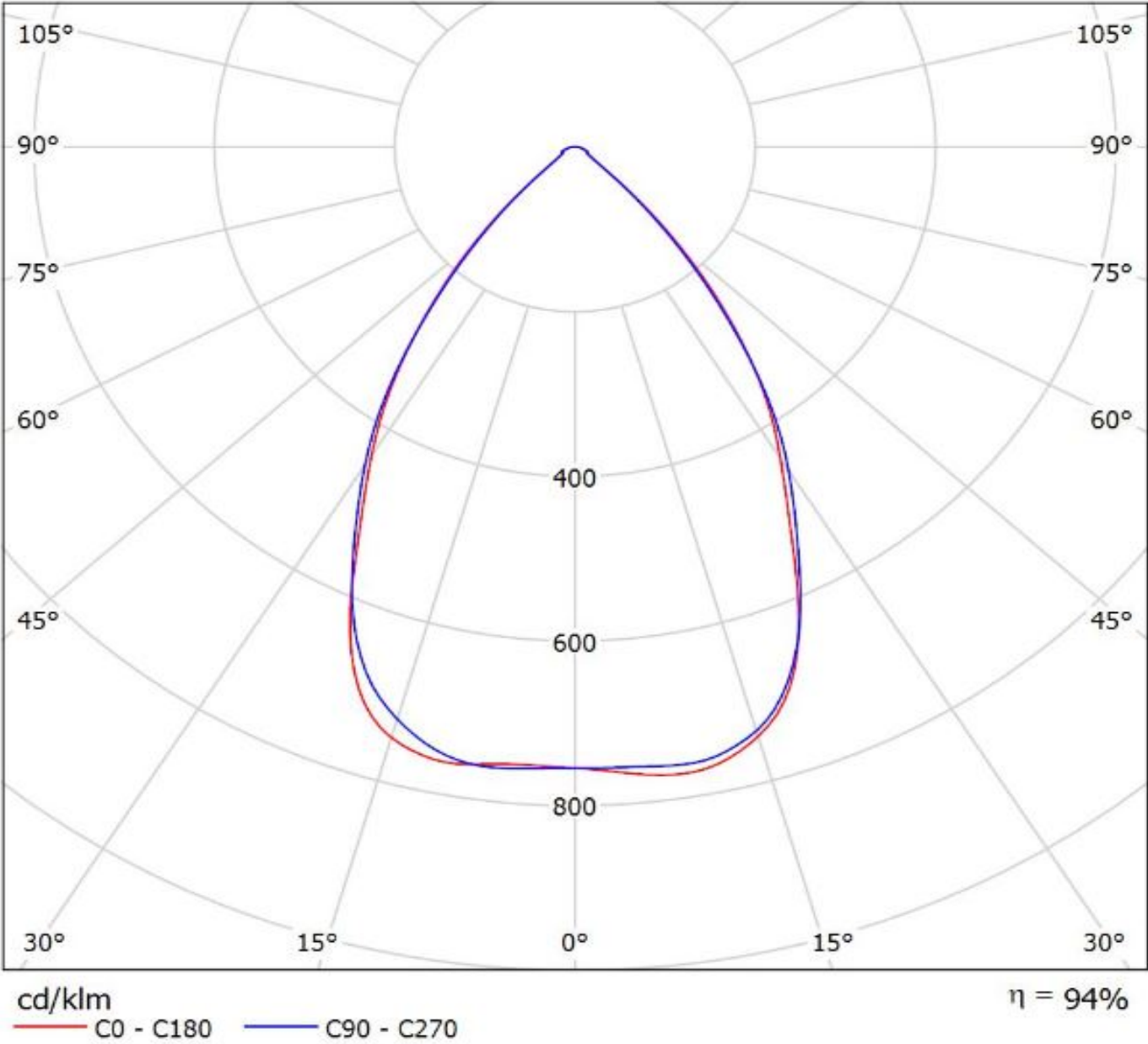
Luminaire: Ledil Oy FN15186_STELLA-HB_(CLU056)_SIMULATED
Lamps: 1 x Citizen CLU056 (CLU056-3618C1-303M2G2)



cd/klm
C0 - C180 C90 - C270

$\eta = 92\%$

Luminaire: Ledil FN15186_STELLA-HB_(CXM-22_+BW)
Lamps: 1 x LUMINUS_CXM-
22_+Bender&Wirth_431TypL3_1259.61lm@250mA_P=8.0332W_CCT=3000K_I=0.25A



NOTE: The typical divergence will be changed by different color, chip size and chip position tolerance. The typical total divergence is the full angle measured where the luminous intensity is half of the peak value.

GENERAL INFORMATION

- Product series especially designed & optimized for series of LEDs.
- Special care taken to make light distribution as uniform as possible.

Note! Due to use of high power COB's with this product, special attention to proper thermal design is highly recommended. LEDiL has no liability for direct, indirect or consecutive damages arising from the LEDiL products being used outside of the recommended temperature range.