

DETAILS

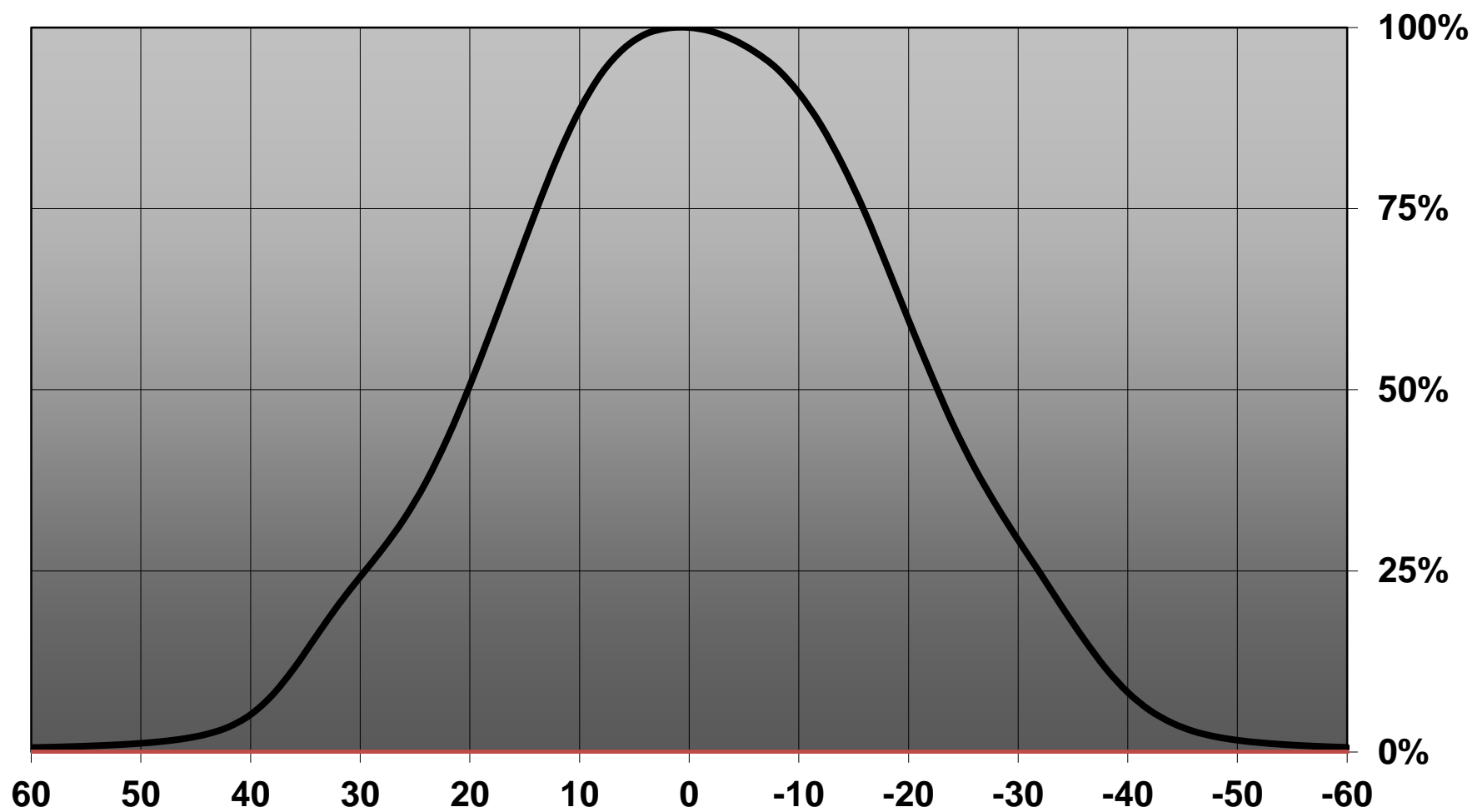
Product Number	CN13132_MIRELLA-50-W-DL-PF
Family	Mirella
Type	RefPack
Color	metal
Diameter	49,9 mm
Height	25,5 mm
Style	round
Optic Material	PC
Holder Material	PC
Fastening	screw, glue
Status	production ready
ROHS Compliant	Yes
Date Updated	21/04/2016



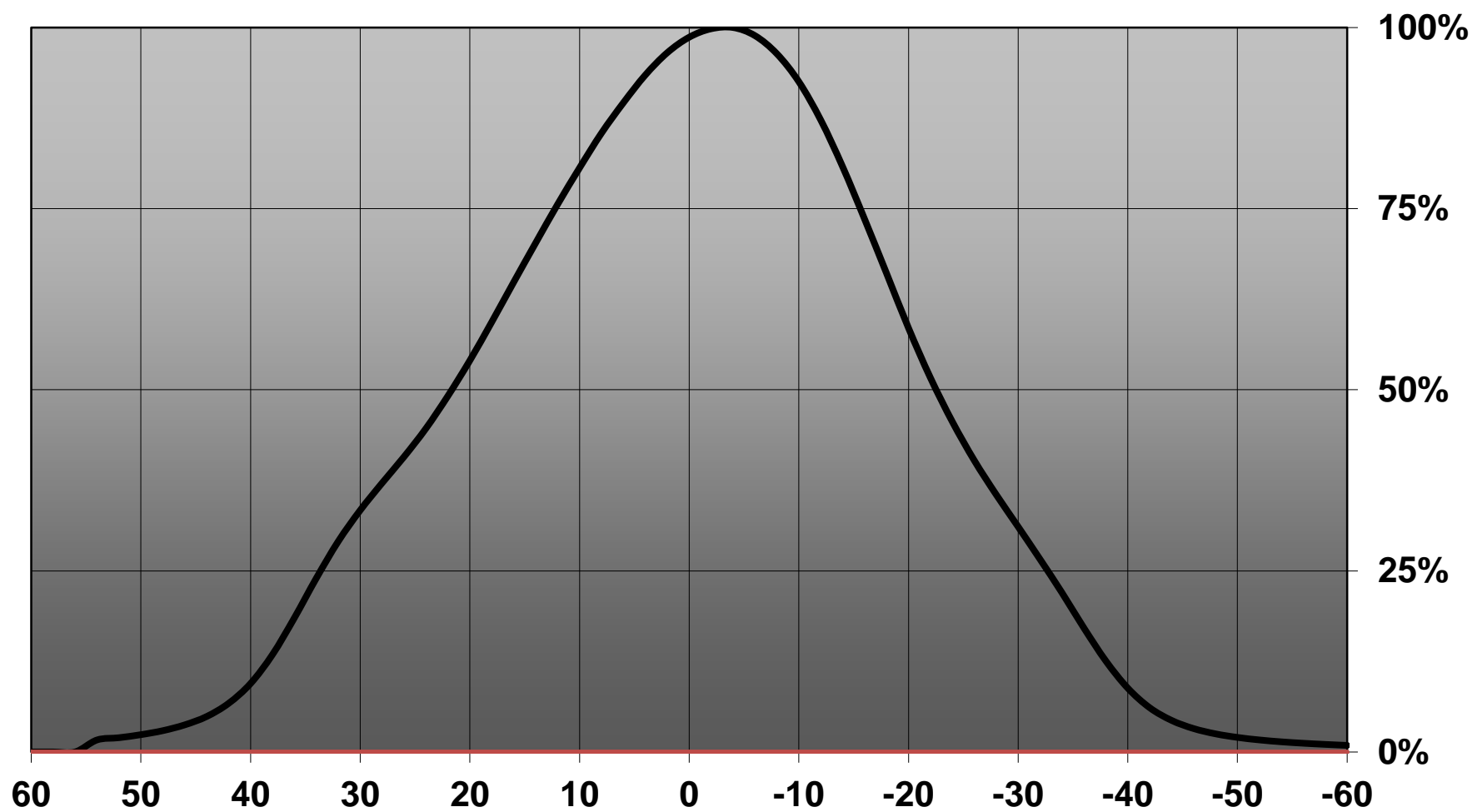
OPTICAL PROPERTIES

LED	Viewing	Light	Effi-		Connector
	Angle	Beam	ciency	cd/lm	
Soleroiq S9	sim: 51	Wide	sim: 85 %	sim: 1.200	LEDiL: LEDiL
MK-R	34 deg	Wide	80 %	1.660	-
XHP50	39 deg	Wide	82 %	1.400	-
CLU700	39 deg	Wide	82 %	1.400	-
XHP70	43 deg	Wide	81 %	1.300	-
CLL01x	44 deg	Wide	86 %	1.400	-
COB 4W	44 deg	Wide	83 %	1.400	-
Mini Zenigata (GW6BM)	45 deg	Wide	81 %	1.100	-
MHD-E/G	45 deg	Wide	84 %	1.200	-
Duris S10	45 deg	Wide	79 %	1.300	LEDiL: LEDiL
CLL02x/CLU02x (LES10)	46 deg	Wide	86 %	1.500	-
ZC4/6	48 deg	Wide	81 %	1.200	-
CXM-9	49 deg	Wide	83 %	1.100	-
MT-G2	51 deg	Wide	87 %	1.200	-
MT-G	52 deg	Wide	86 %	1.200	-

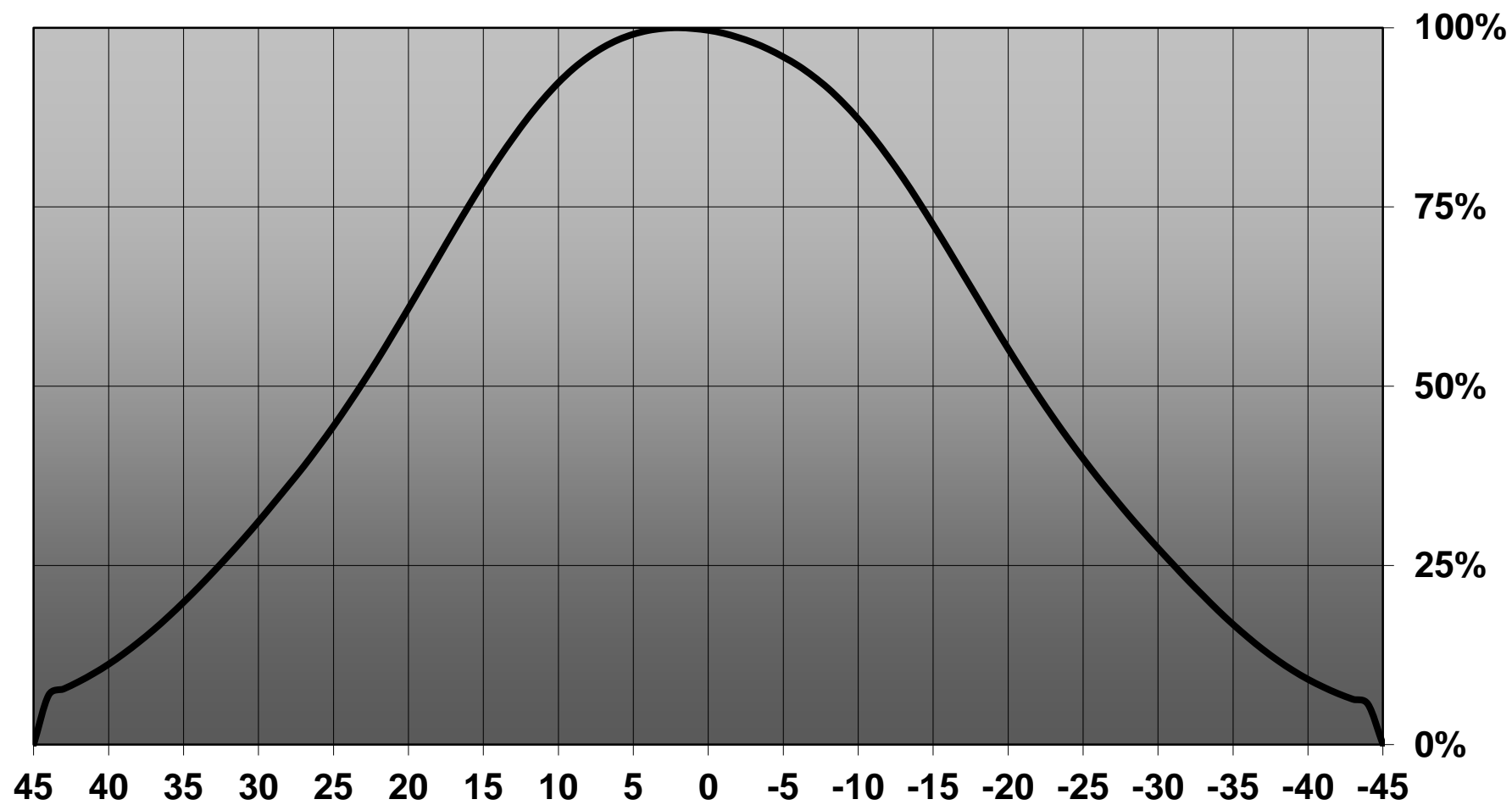
Relative intensity of CN13132_MIRELLA-50-W-DL-PF-(CLL010)



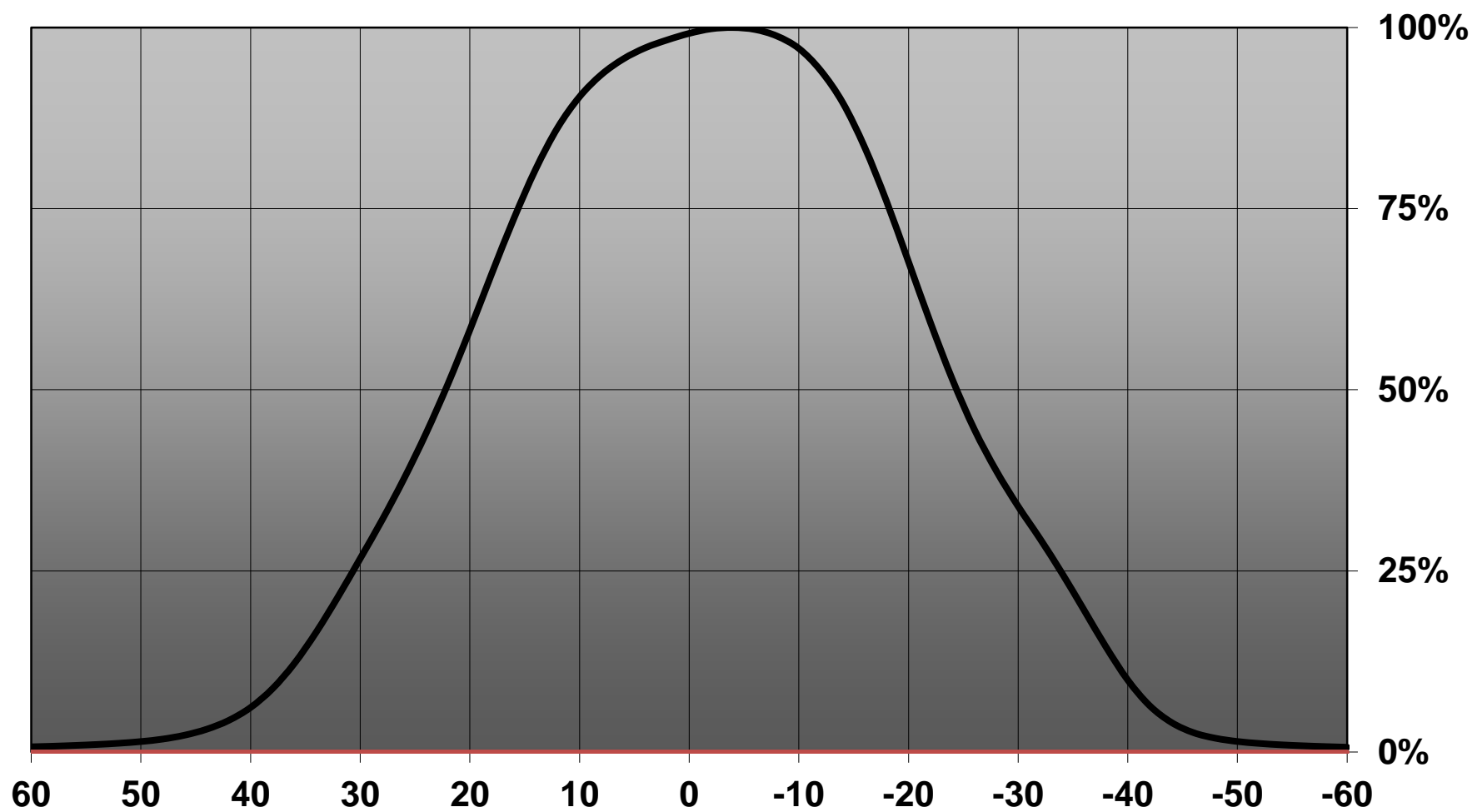
Relative intensity of Mirella-W-DL-4WLG



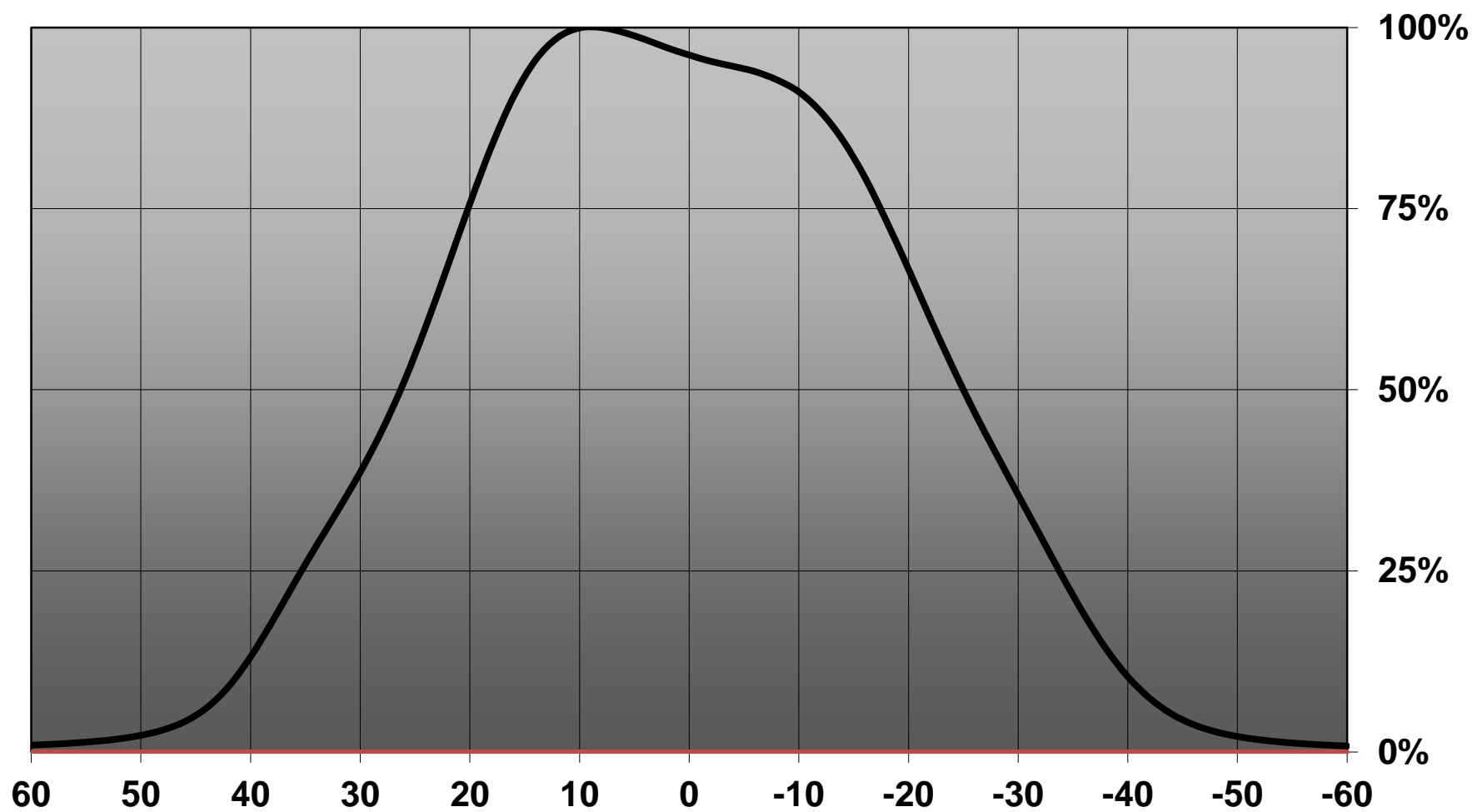
Relative intensity of CN13132_MIRELLA-50-W-DL-PF_(Duris_S10)



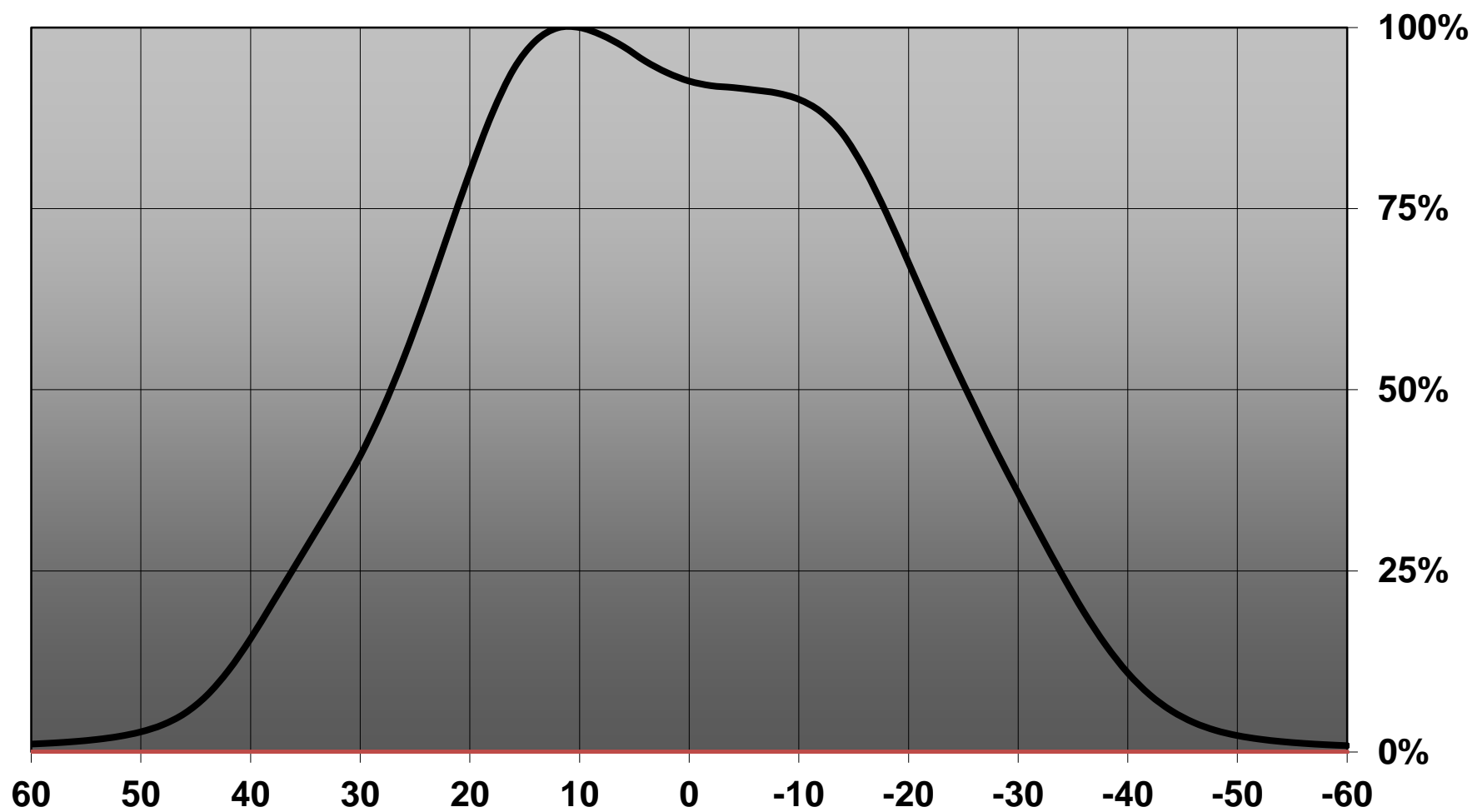
Relative intensity of CN13132_MIRELLA-50-W-DL-PF-(CLL020)



Relative intensity of CN13132_MIRELLA-50-W-DL-PF-(MTG2)



Relative intensity of CN13132_MIRELLA-50-W-DL-PF-(MTG)



D

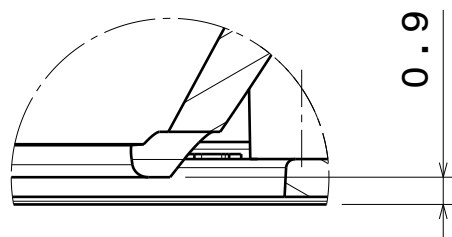
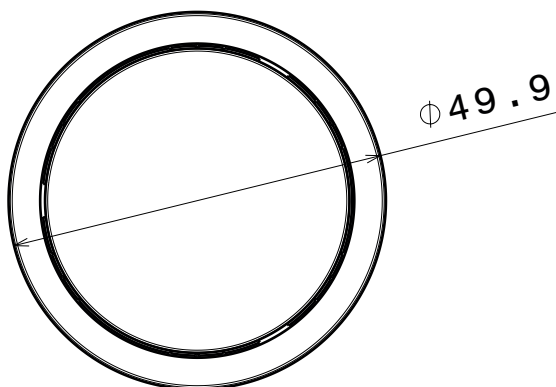
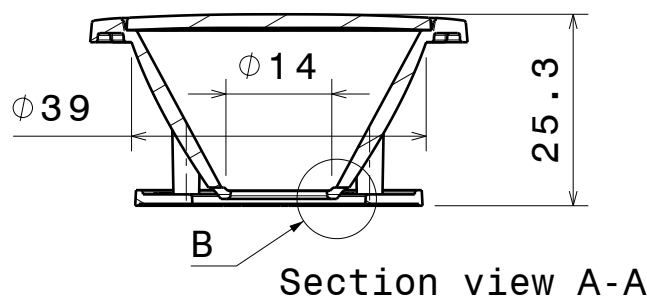
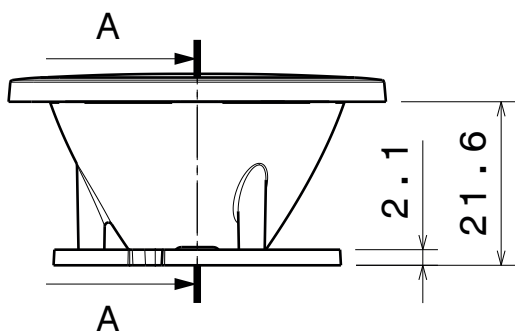
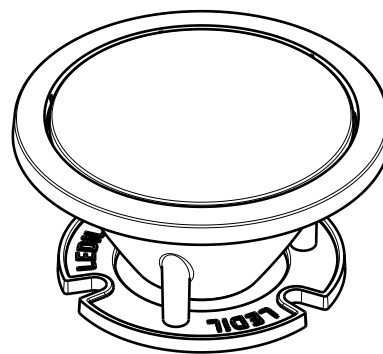
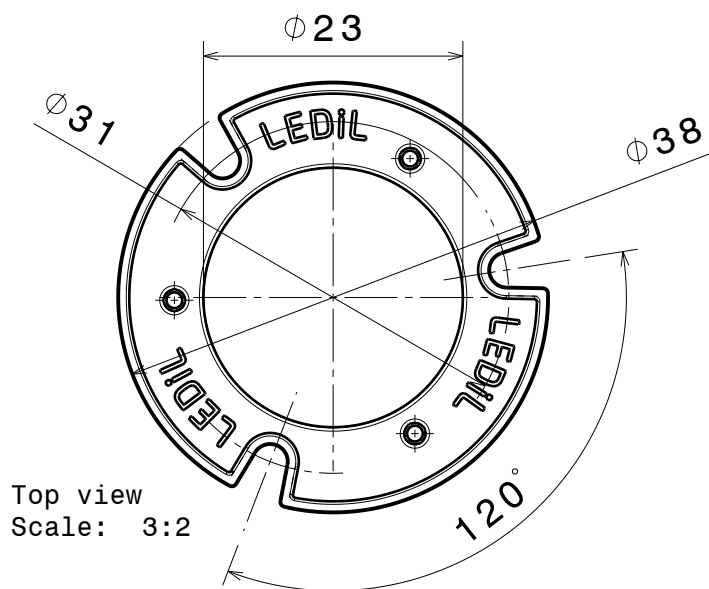
C

B

A

4

4



NOTE: It is recommended to use glue like DELO-PUR 9895 for pin fastening.
[http://www.delo.de/fileadmin/datasheet/DELO-PUR_9895_\(TIDB-GB\).pdf](http://www.delo.de/fileadmin/datasheet/DELO-PUR_9895_(TIDB-GB).pdf)

This drawing is our property.
 It can't be reproduced
 or communicated without
 our written agreement.

LEDIL

Ledil Oy
 Salorankatu 10
 FIN 24240 SALO
 Finland

DRAWING TITLE

Mechanical drawing

DRAWN BY

DATE

as

28.8.2012

CHECKED BY

DATE

VS

28.8.2012

DESIGNED BY

DATE

as

SIZE

A4

SCALE

1:1

WEIGHT

-

REV

001

SHEET

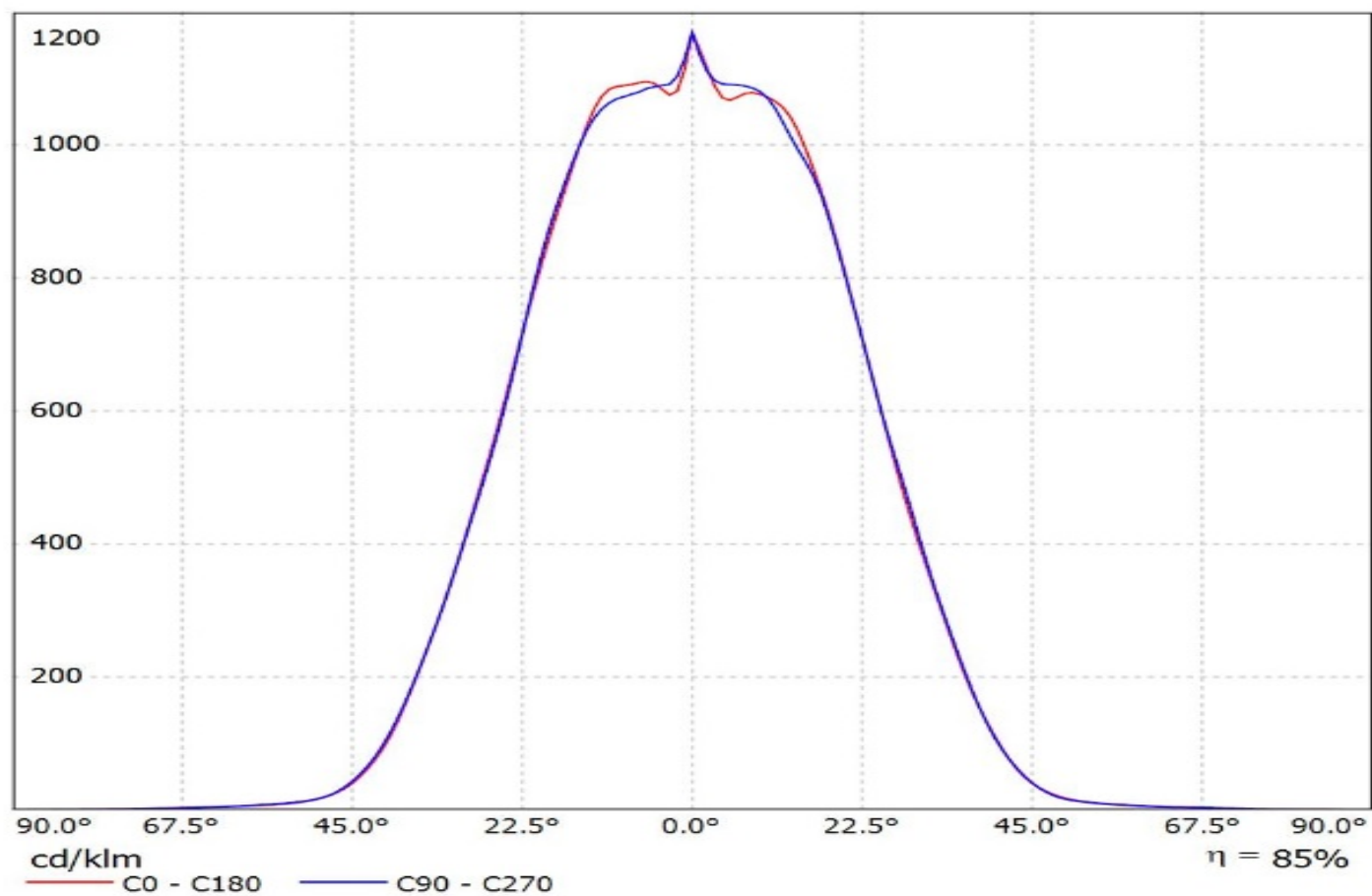
1/1

D

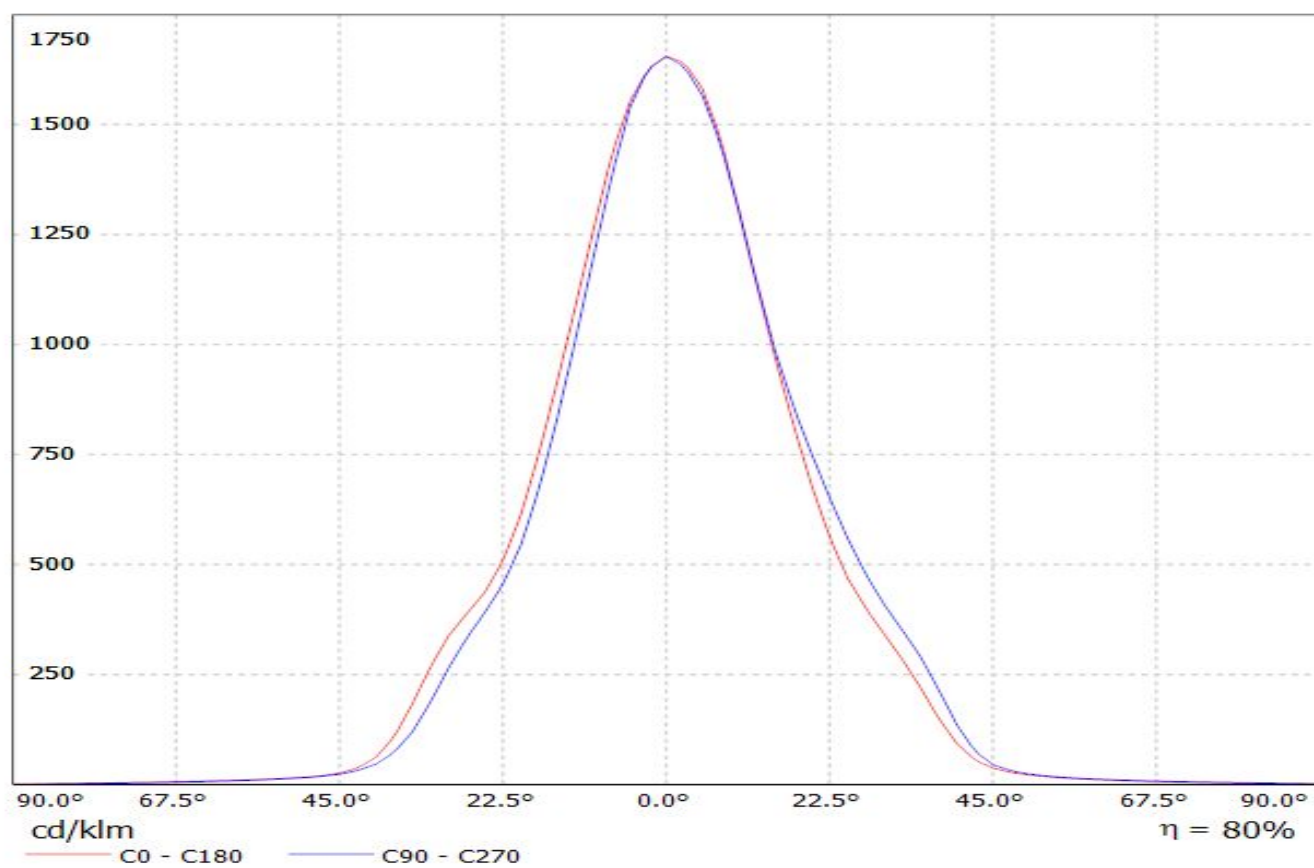
A

1

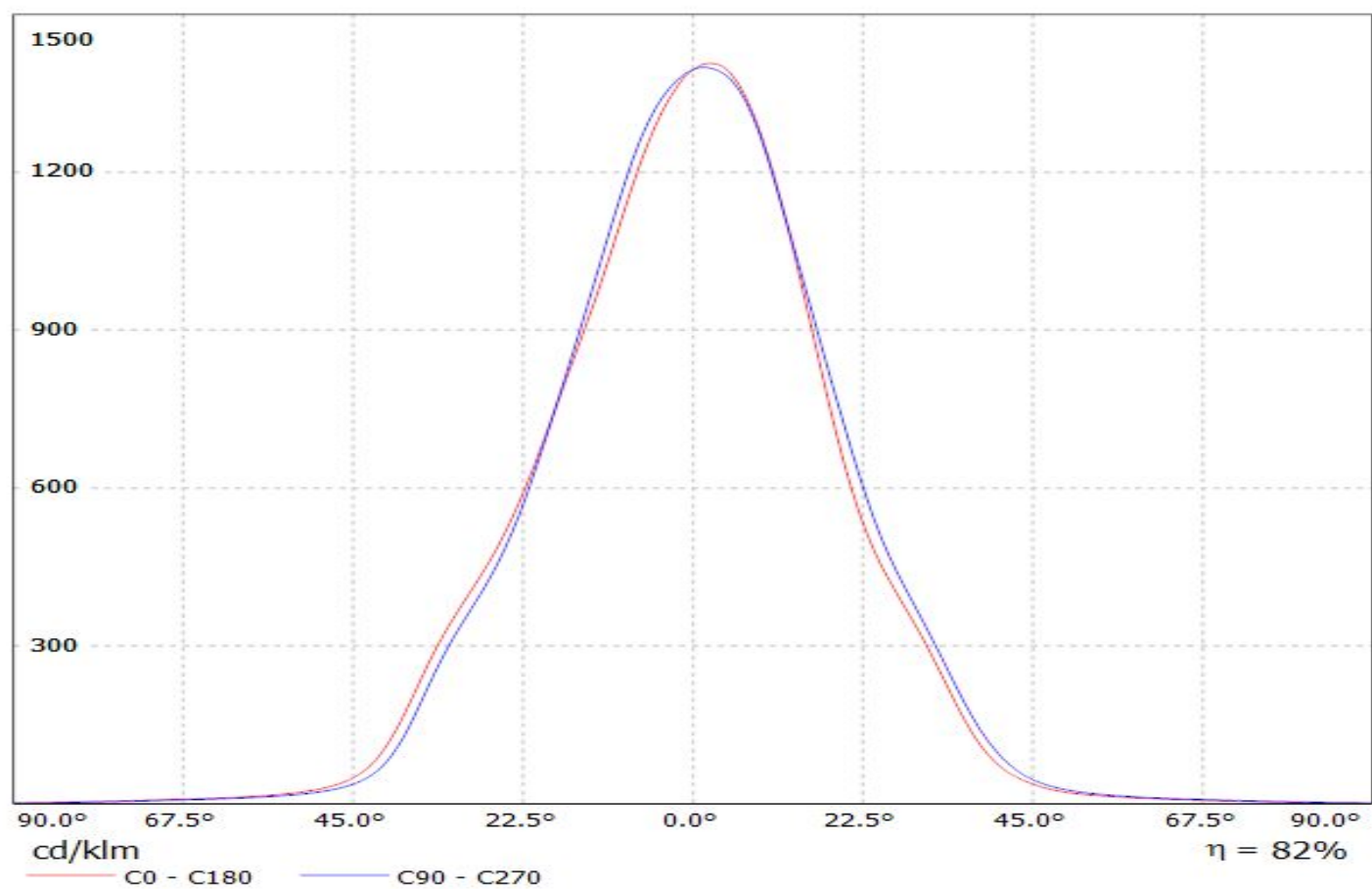
Luminaire: Ledil Oy CN13132_MIRELLA-50-W-DL-PF_(Soleriq_S9)_SIMULATED
Lamps: 1 x Osram Soleriq S9 (GW KAJFB3.EM)



Luminaire: LEDiL Oy CN13132_MIRELLA-50-W-DL-PF_(MK-R) Eff.80%
Lamps: 1 x CREE_MK-R_358.348lm@250mA_P=2.84311W_I=249.9mA

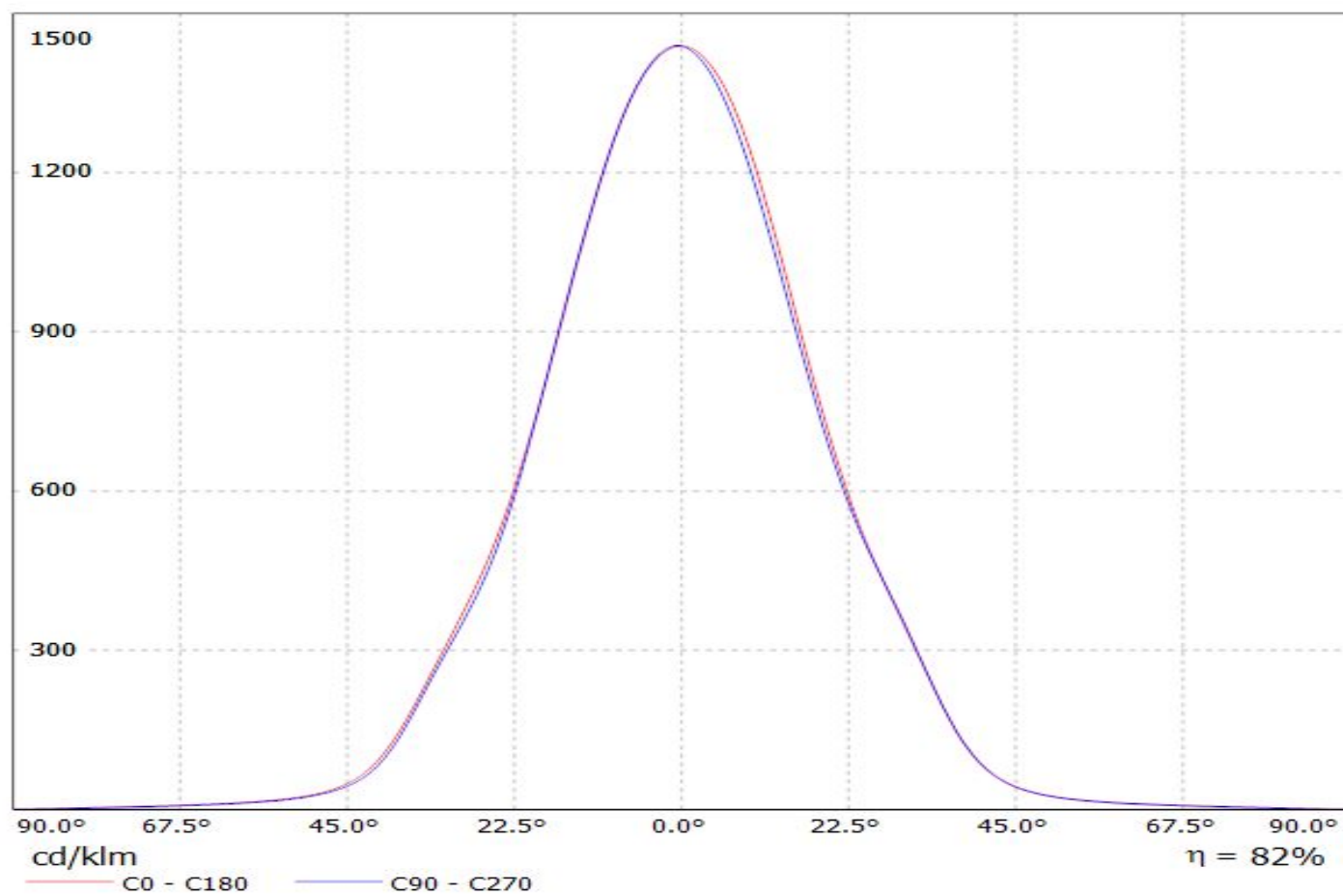


Luminaire: LEDiL Oy CN13132_MIRELLA-50-W-DL-PF_(CREE_XHP50_WARM_WHITE)
Lamps: 1 x CREE_XHP50_WARM_WHITE_195.088lm@250mA_P=1.40004W_I=0.2499A

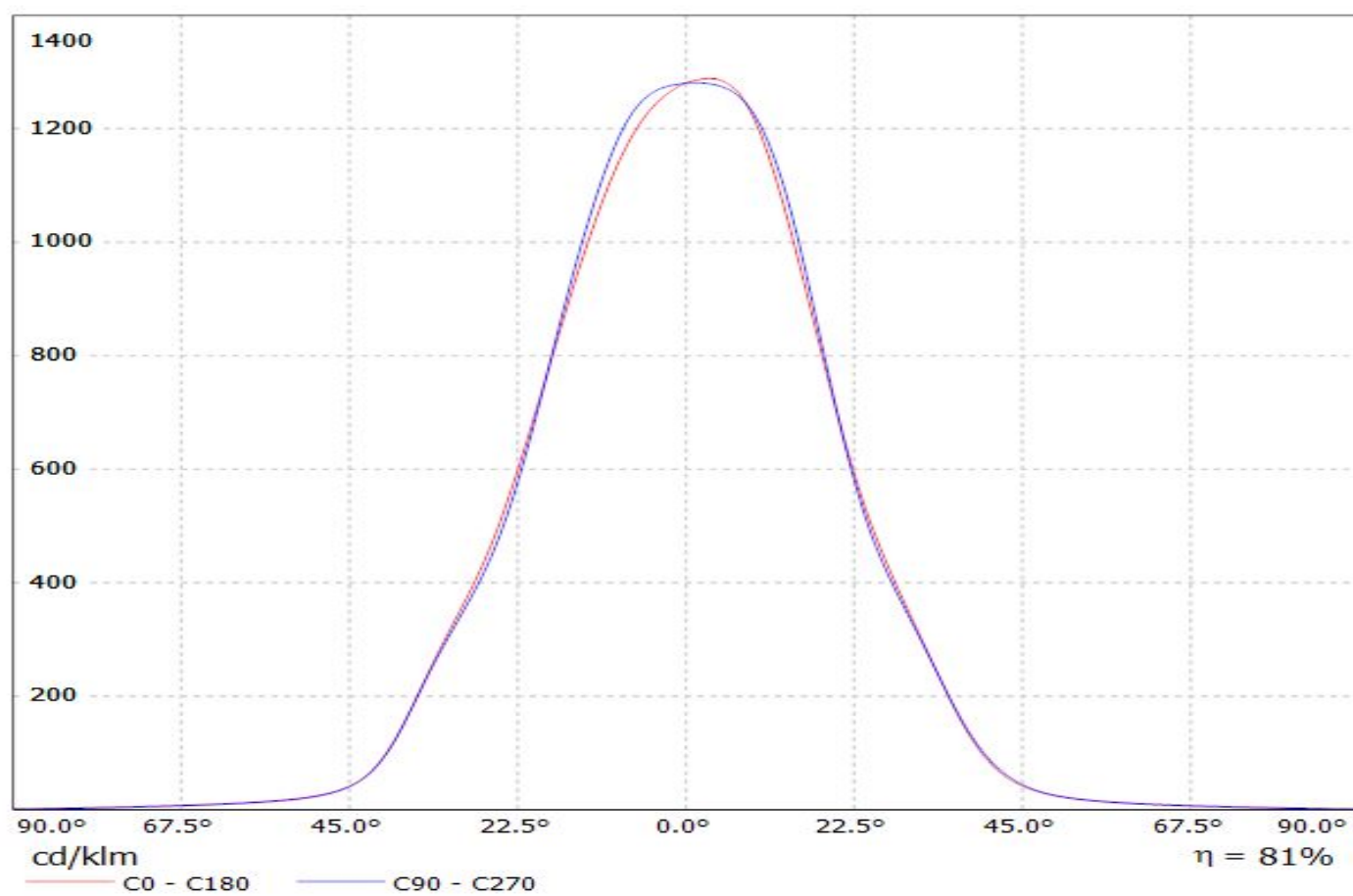


Luminaire: LEDiL Oy CN13132_MIRELLA-50-W-DL-PF_(CLU700)

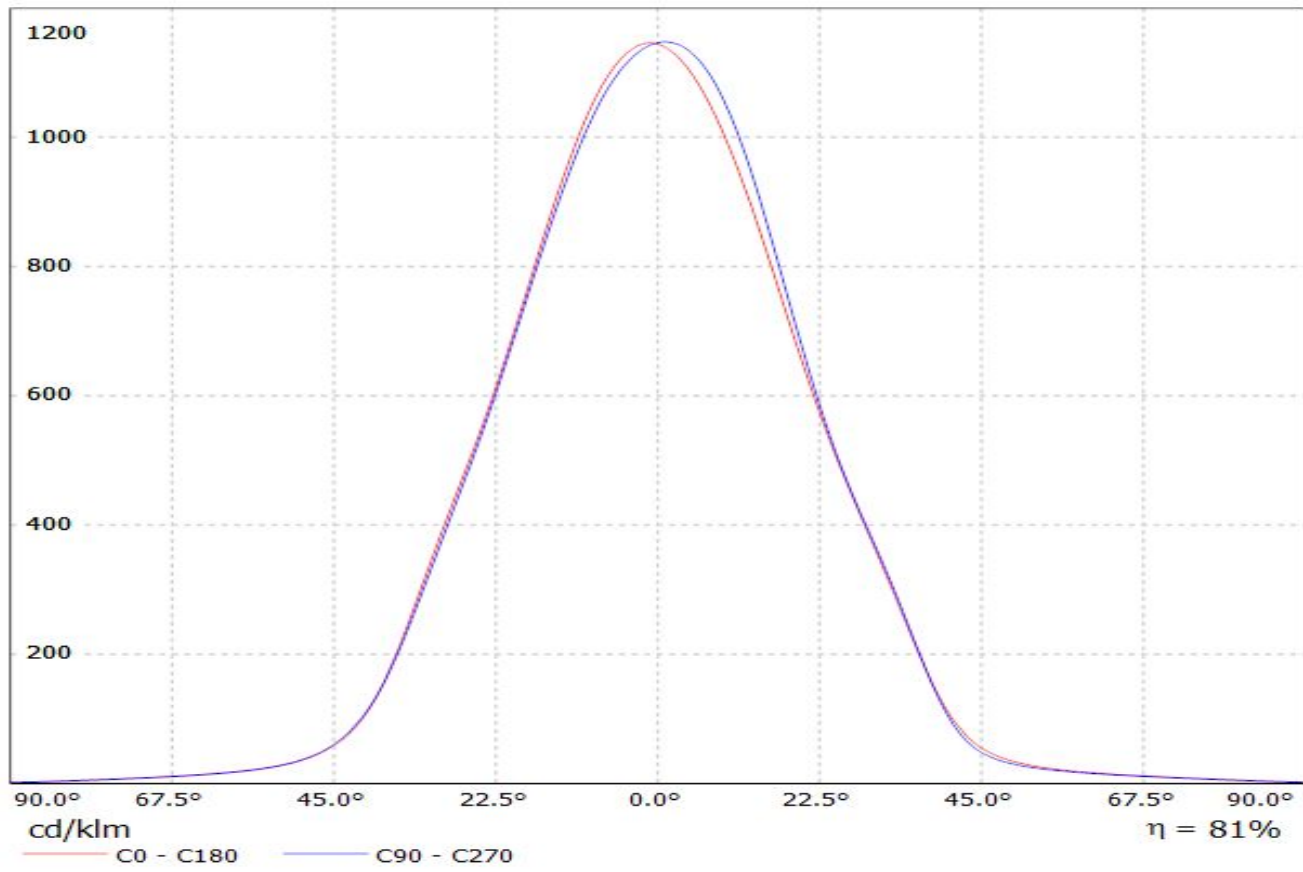
Lamps: 1 x Citizen_CLU700_C13083_PF-SOCKET_394.785lm@100mA_P=2.92999W_I=0.1044A



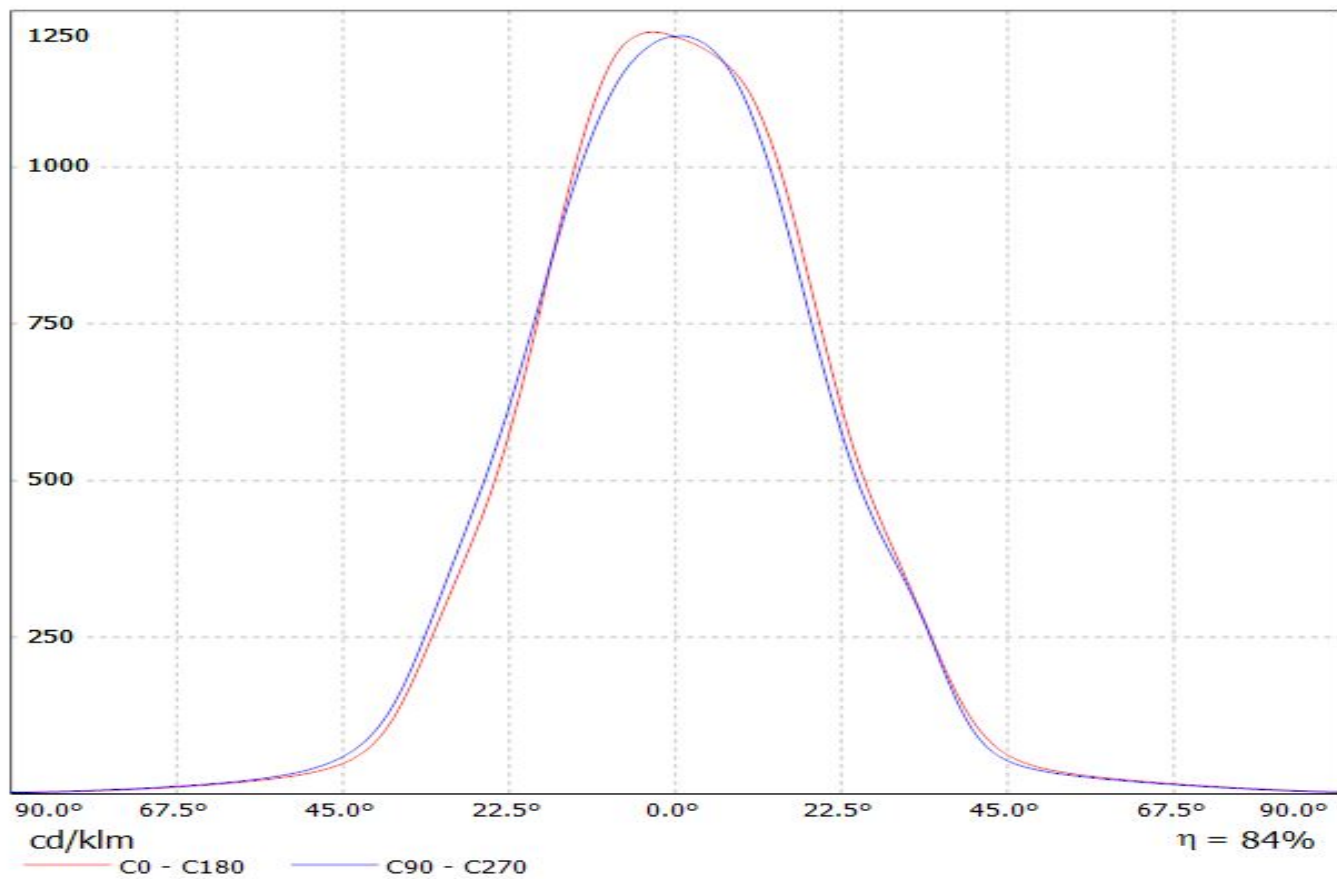
Luminaire: LEDiL Oy CN13132_MIRELLA-50-W-DL-PF_(CREE_XHP70)
Lamps: 1 x CREE_XHP70_260.212lm@250mA_P=1.383W_I=0.2499A



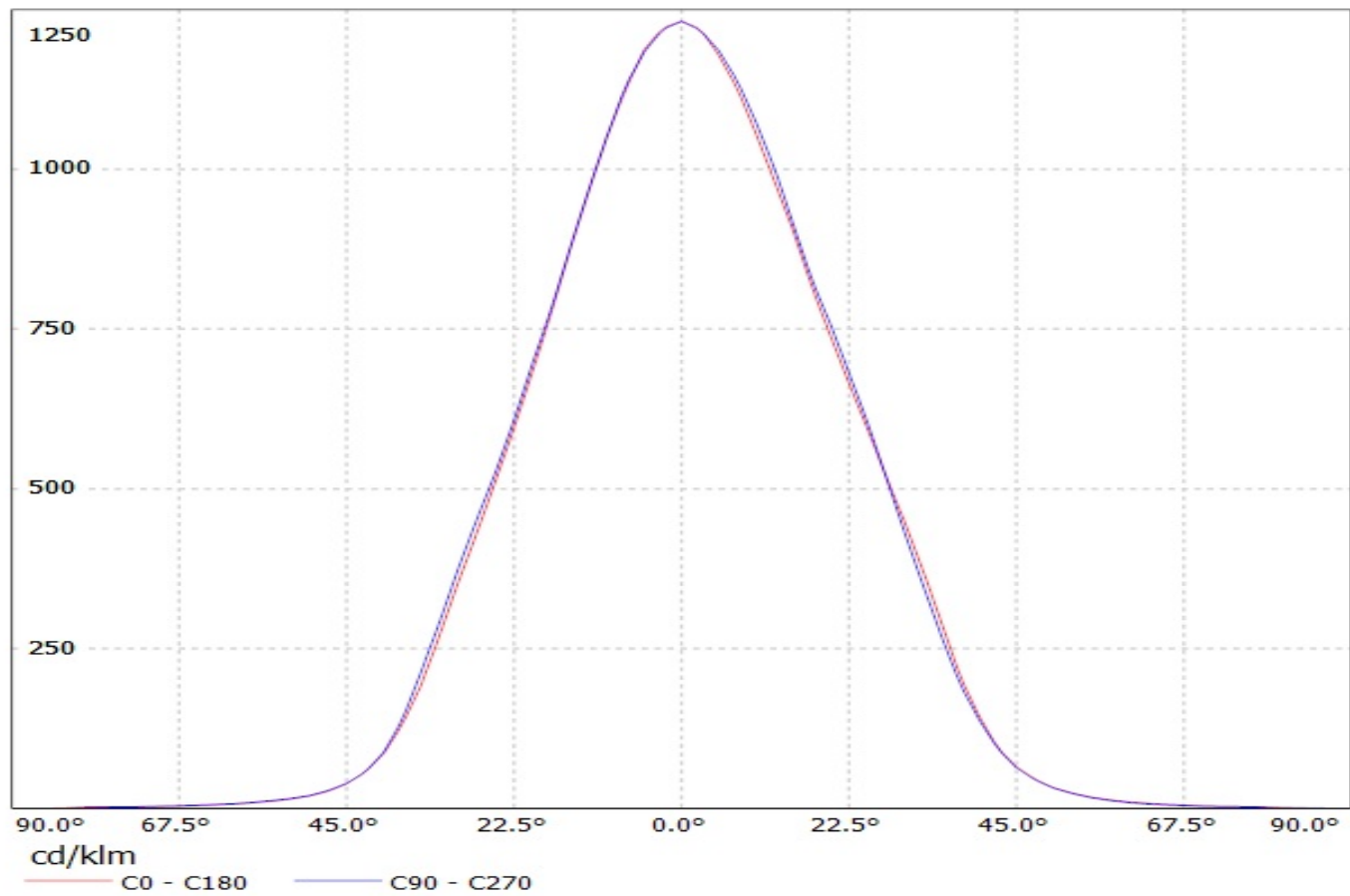
Luminaire: LEDiL Oy CN13132_MIRELLA-50-W-DL-PF_(Mini_Zenigata_GW6BM) Eff.81.2%
Lamps: 1 x Mini_Zenigata_GW6BM (803.772lm@250mA)



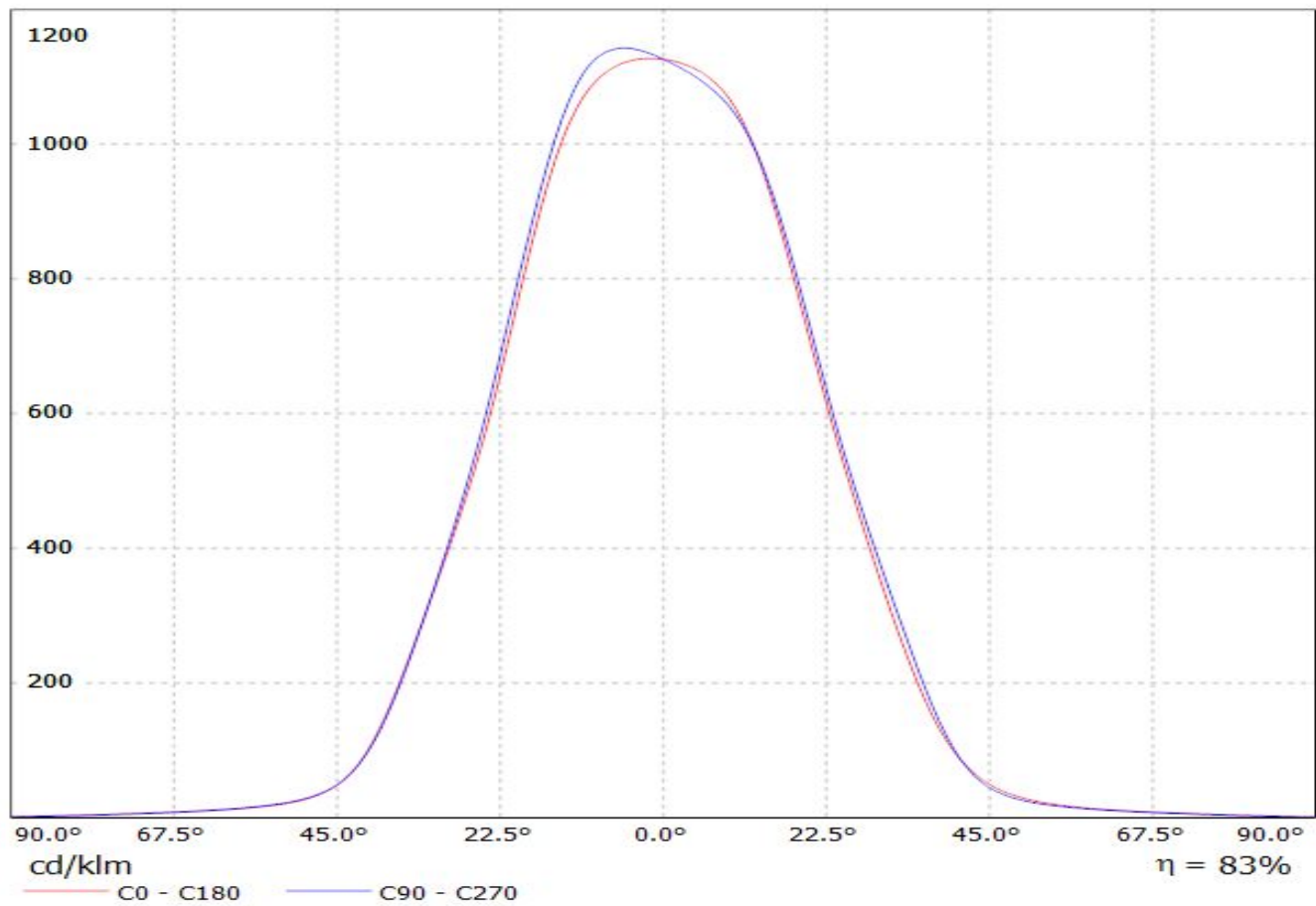
Luminaire: Ledil CN13132_MIRELLA-50-W-DL-PF_(MHD-G)
Lamps: 1 x Cree MHD-G_530.44lm@100mA_P=3.0W_I=0.100A



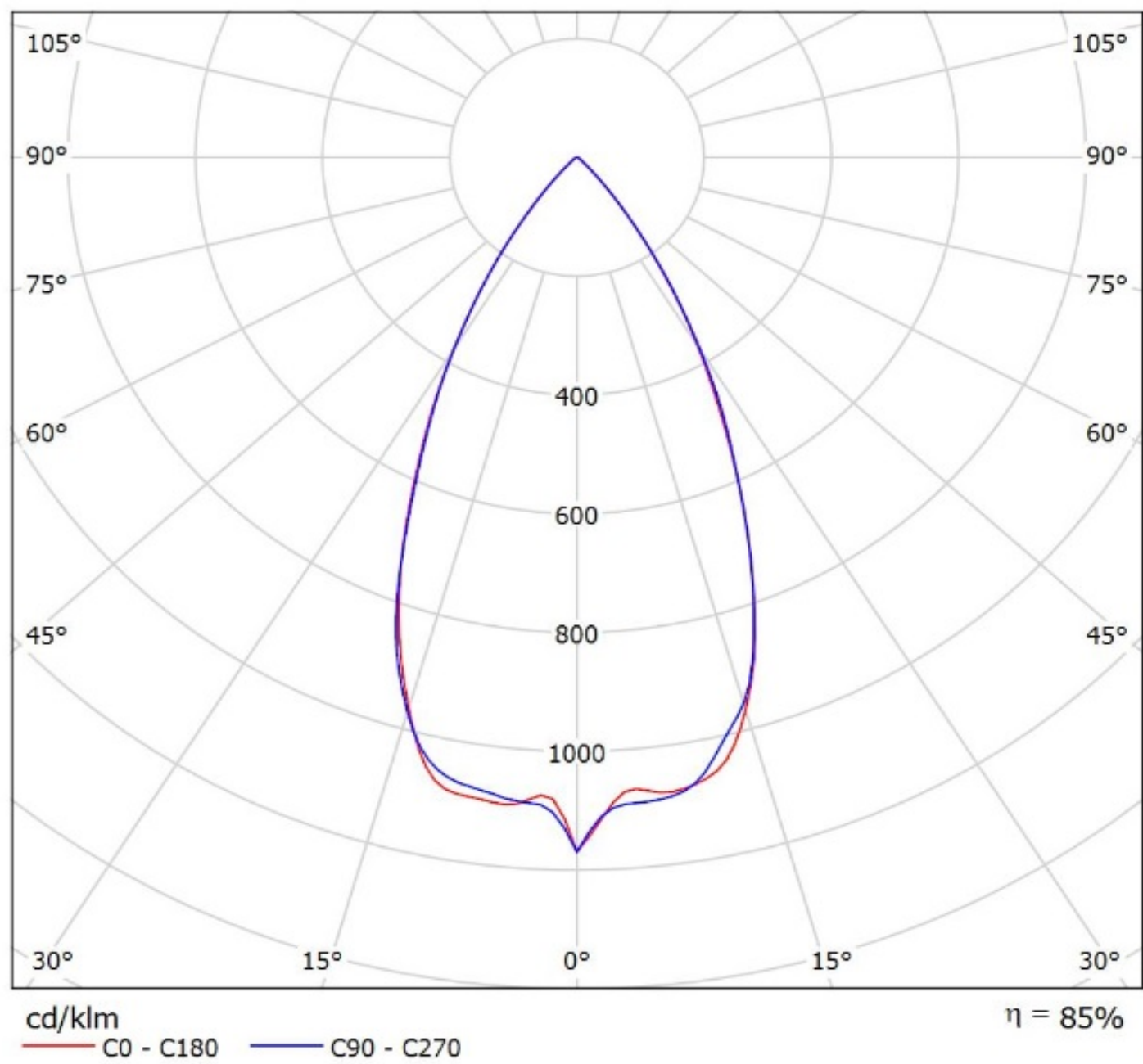
Luminaire: LEDil Oy CN13132_MIRELLA-50-W-DL-PF_(ZC6) Efficiency=81%
Lamps: 1 x Seoul ZC6 (SDW81F1C) 422lm @ 100mA CCT=3100K P=3.4W I=100mA



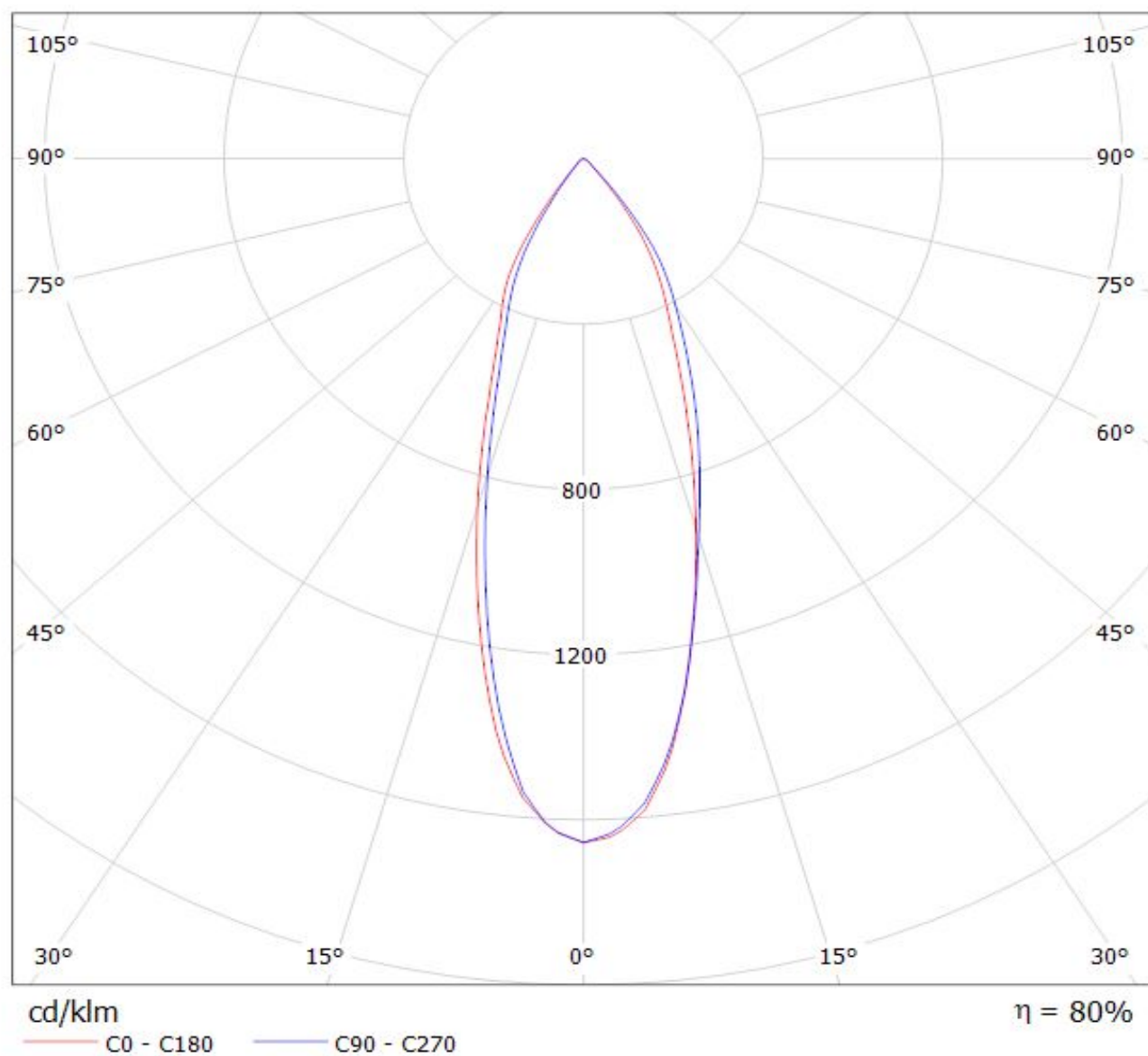
Luminaire: LEDiL Oy CN13132_MIRELLA-50-W-DL-PF_(CXM-9)
Lamps: 1 x Luminus_XNOVA_CXM-9_(AA00)_974.297lm@240mA_P=8.2836W_I=240mA



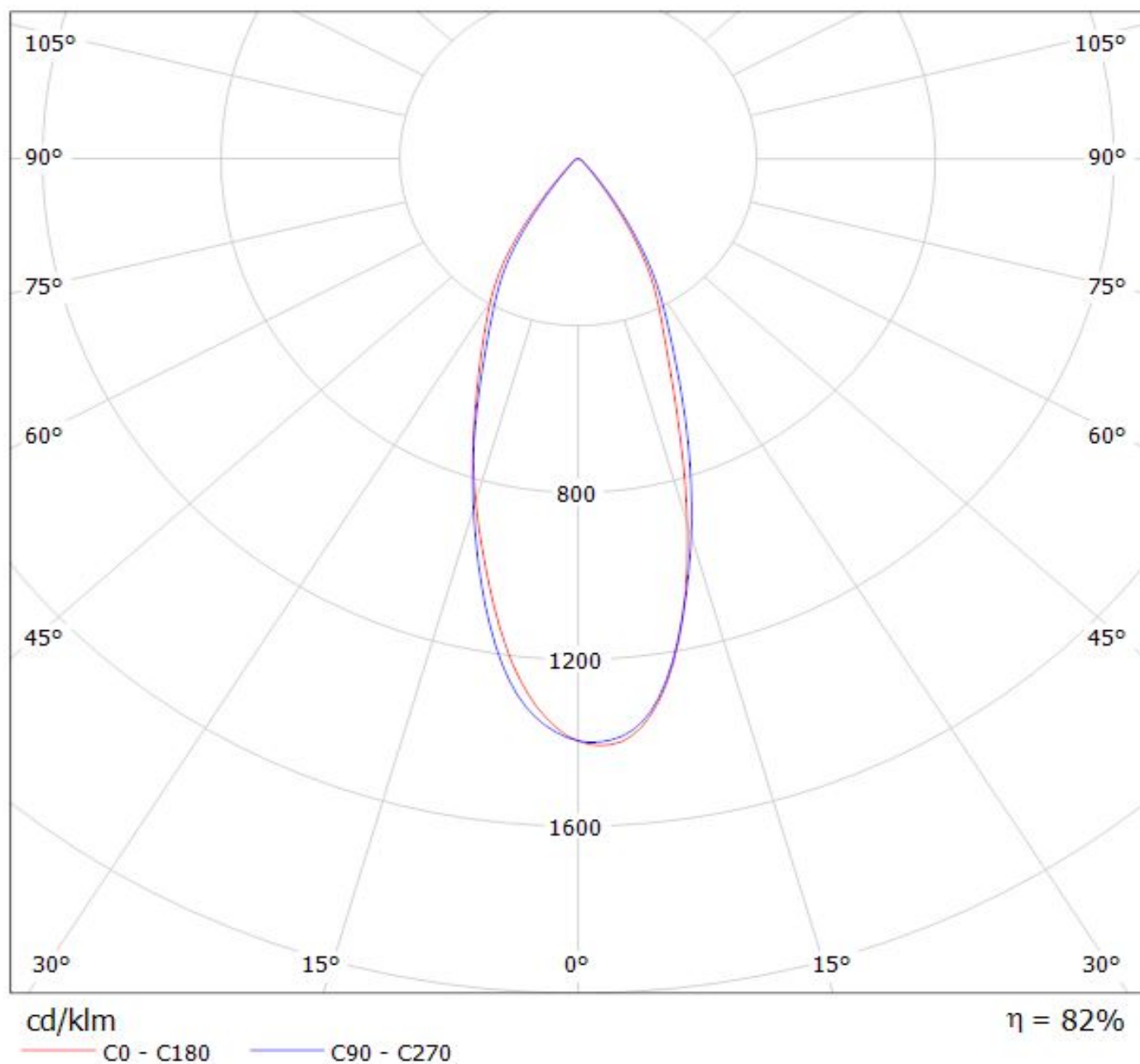
Luminaire: Ledil Oy CN13132_MIRELLA-50-W-DL-PF_(Soleriq_S9)_SIMULATED
Lamps: 1 x Osram Soleriq S9 (GW KAJFB3.EM)



Luminaire: LEDiL Oy CN13132_MIRELLA-50-W-DL-PF_(MK-R) Eff.80%
Lamps: 1 x CREE_MK-R_358.348lm@250mA_P=2.84311W_I=249.9mA

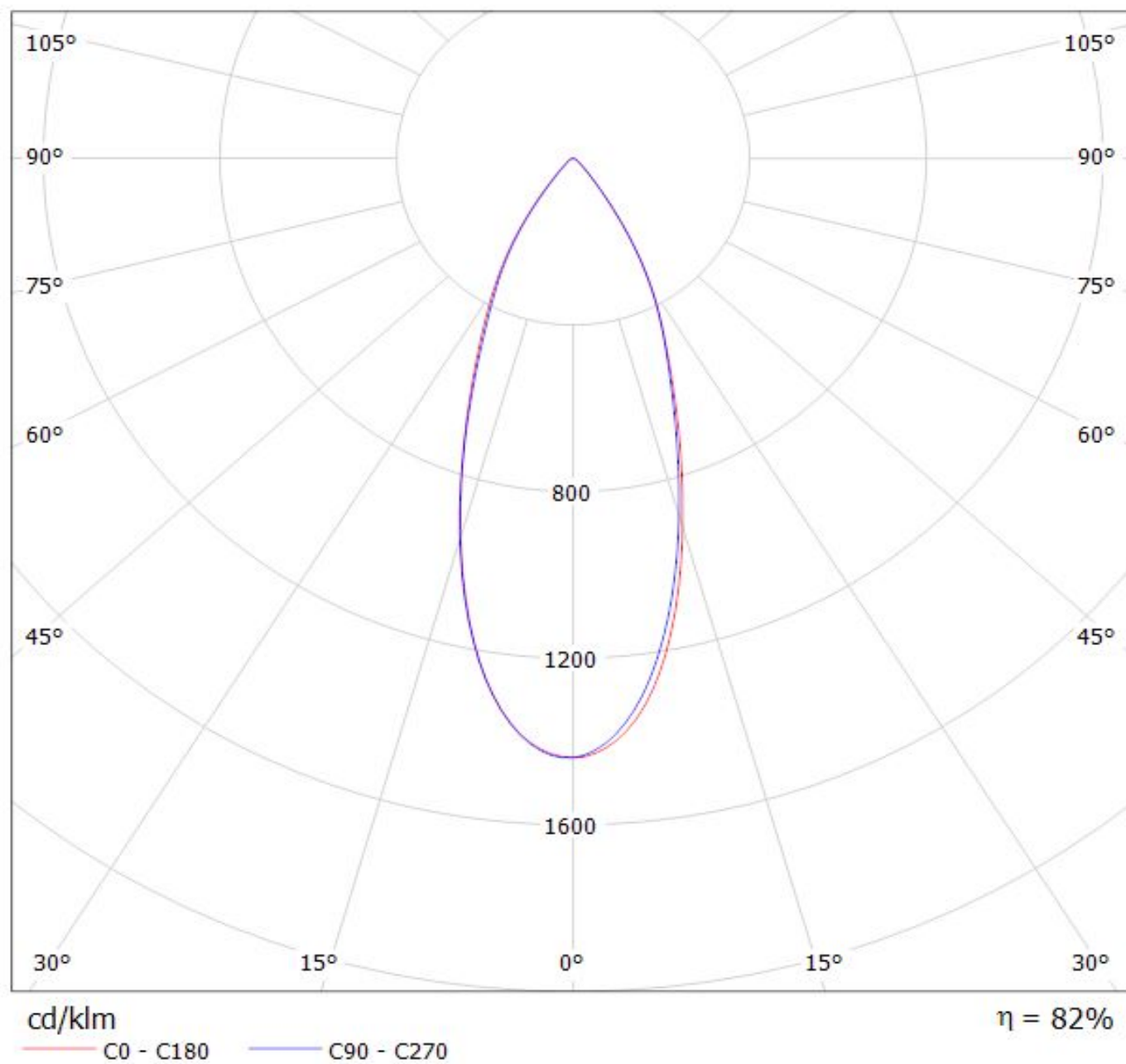


Luminaire: LEDiL Oy CN13132_MIRELLA-50-W-DL-PF_(CREE_XHP50_WARM_WHITE)
Lamps: 1 x CREE_XHP50_WARM_WHITE_195.088lm@250mA_P=1.40004W_I=0.2499A

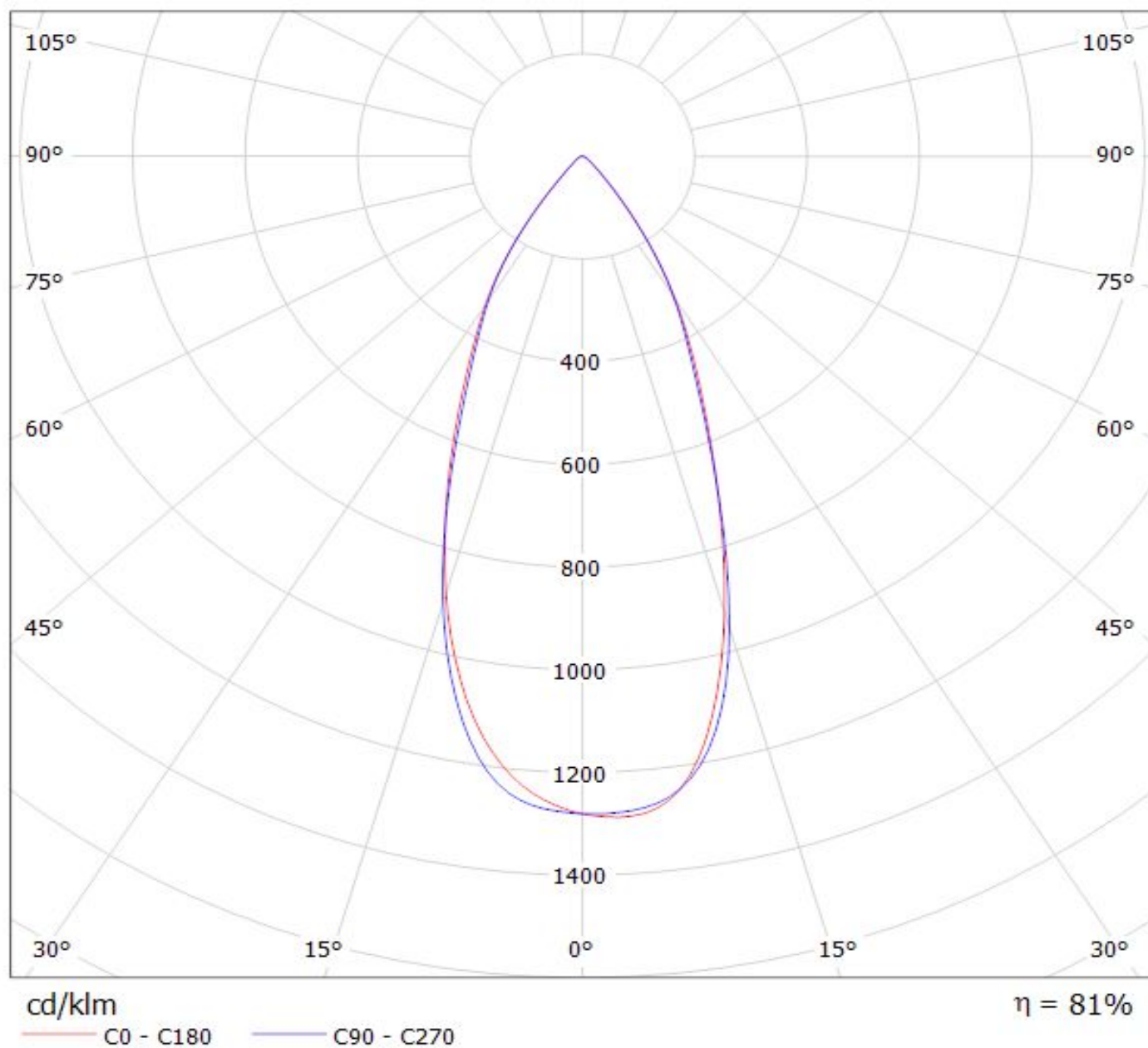


Luminaire: LEDiL Oy CN13132_MIRELLA-50-W-DL-PF_(CLU700)

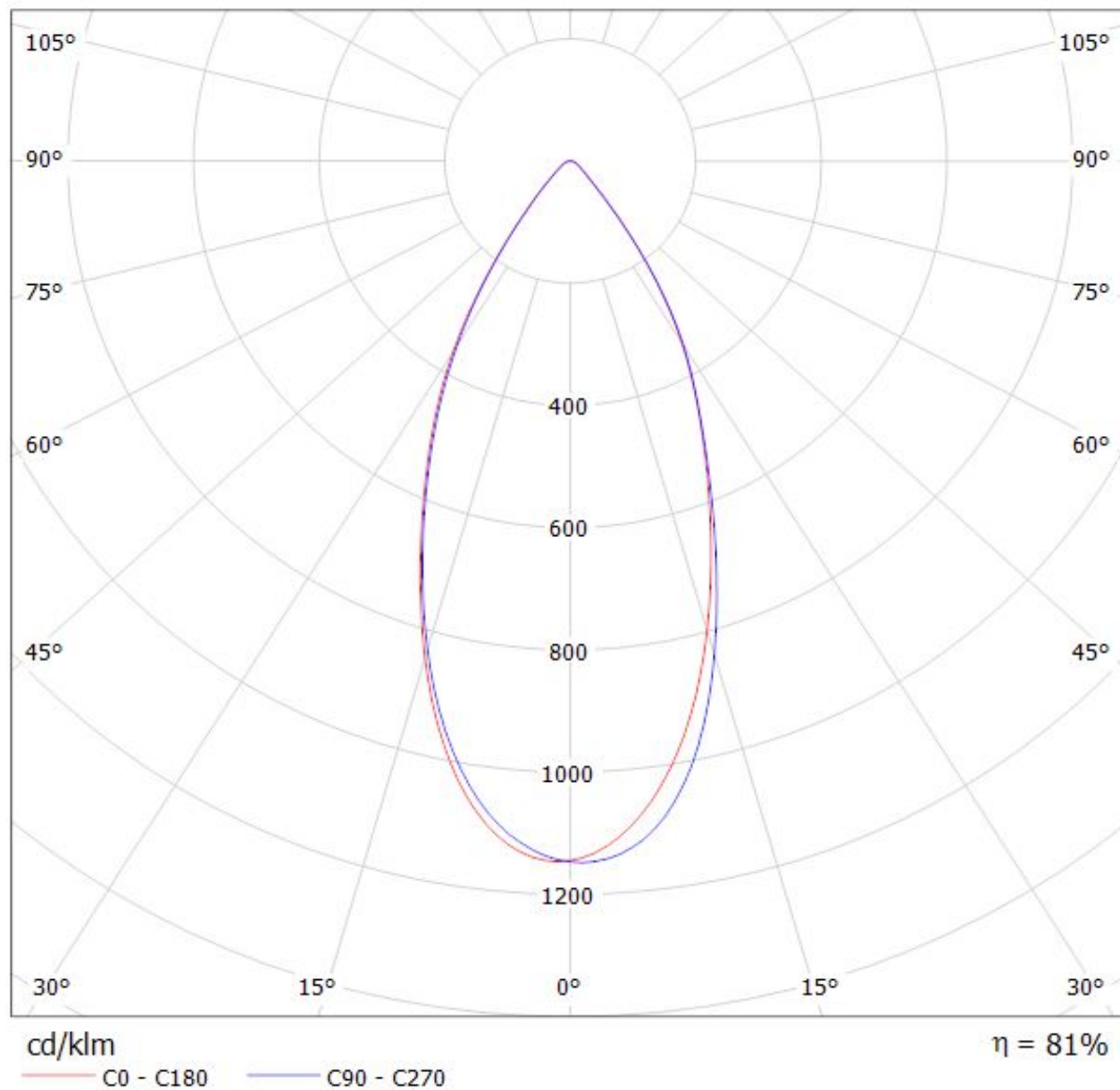
Lamps: 1 x Citizen_CLU700_C13083_PF-SOCKET_394.785lm@100mA_P=2.92999W_I=0.1044A



Luminaire: LEDiL Oy CN13132_MIRELLA-50-W-DL-PF_(CREE_XHP70)
Lamps: 1 x CREE_XHP70_260.212lm@250mA_P=1.383W_I=0.2499A

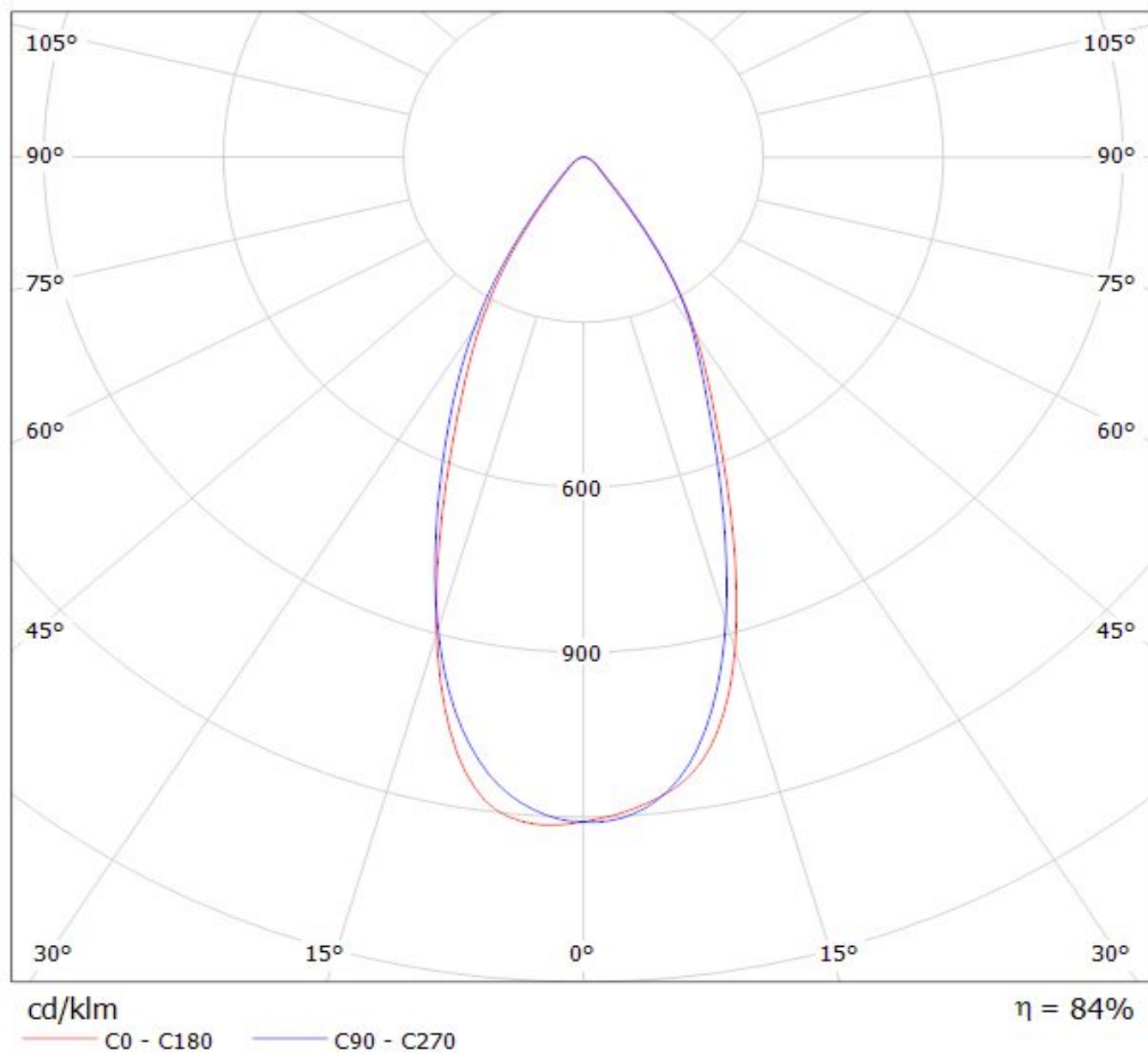


Luminaire: LEDiL Oy CN13132_MIRELLA-50-W-DL-PF_(Mini_Zenigata_GW6BM) Eff.81.2%
Lamps: 1 x Mini_Zenigata_GW6BM (803.772lm@250mA)

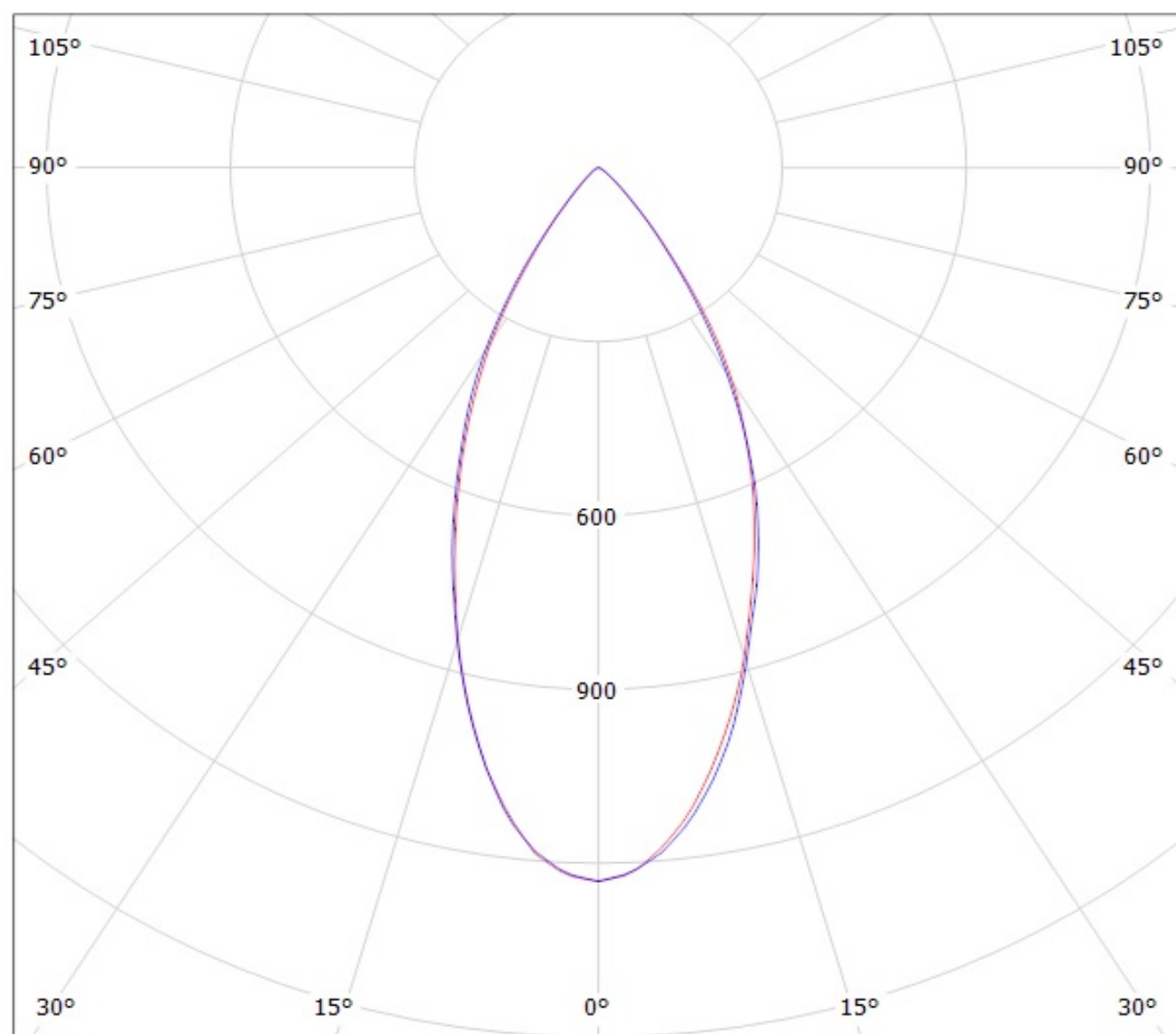


Luminaire: Ledil CN13132_MIRELLA-50-W-DL-PF_(MHD-G)

Lamps: 1 x Cree MHD-G_530.44lm@100mA_P=3.0W_I=0.100A



Luminaire: LEDil Oy CN13132_MIRELLA-50-W-DL-PF_(ZC6) Efficiency=81%
Lamps: 1 x Seoul ZC6 (SDW81F1C) 422lm @ 100mA CCT=3100K P=3.4W I=100mA



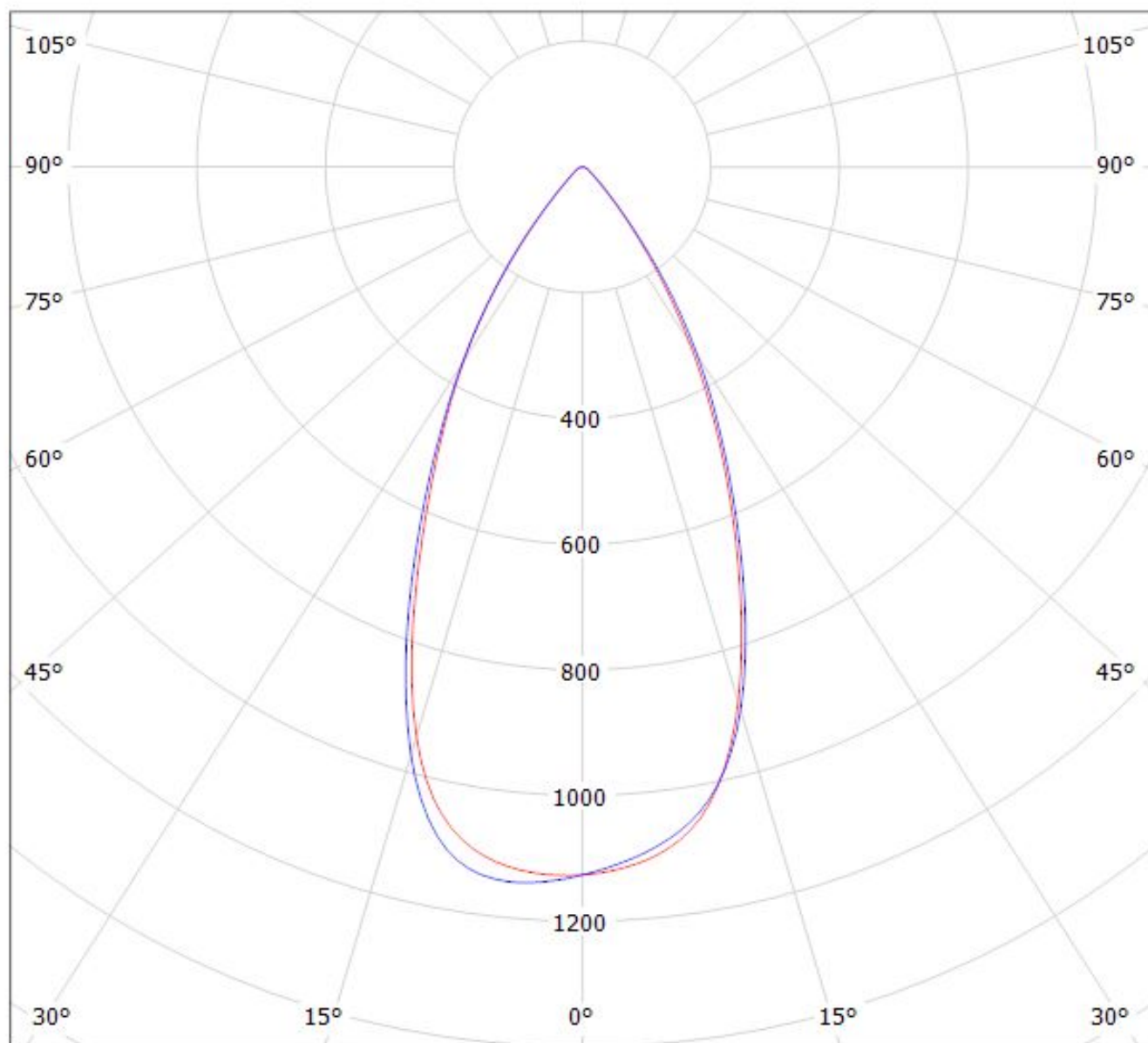
cd/klm

— C0 - C180

— C90 - C270

Luminaire: LEDiL Oy CN13132_MIRELLA-50-W-DL-PF_(CXM-9)

Lamps: 1 x Luminus_XNOVA_CXM-9_(AA00)_974.297lm@240mA_P=8.2836W_I=240mA



cd/klm

— C0 - C180

— C90 - C270

$\eta = 83\%$

NOTE: The typical divergence will be changed by different color, chip size and chip position tolerance. The typical total divergence is the full angle measured where the luminous intensity is half of the peak value.

GENERAL INFORMATION

- Product series especially designed & optimized for series of LEDs.
- Special care taken to make light distribution as uniform as possible.

Note! Due to use of high power COB's with this product, special attention to proper thermal design is highly recommended. LEDiL has no liability for direct, indirect or consecutive damages arising from the LEDiL products being used outside of the recommended temperature range.