

## LIGHT ENGINE UVC VIOLETTA SINGLE 1 LED 30x40mm 70mW

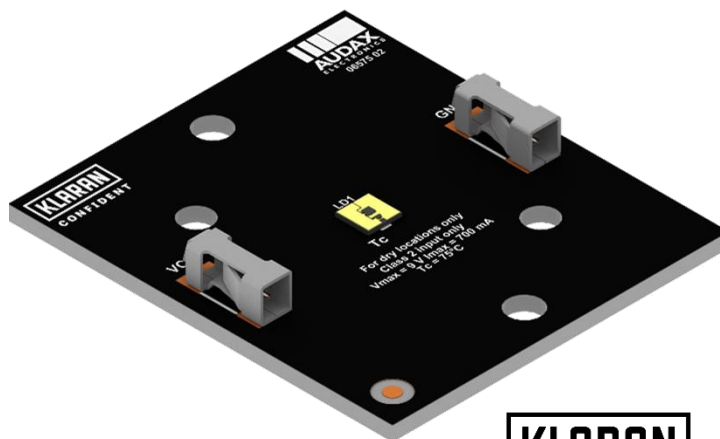
Issue Date	August 2021
Issued by	Conrad, C.

### Applications

- Medical sterilization
- Drinking water disinfection
- Infectious disease control
- Food processing sterilization
- Air sterilization

### Characteristics

- UV Type - UVC
- Wavelength – 275nm
- Efficacy - up to 2.0%
- 05 years warranty



### DRIVING CURRENTS

Parameter	Nominal	Max
LIGHT ENGINE UVC VIOLETTA SINGLE 1 LED 30x40mm 70mW	500 mA	600 mA

### MODULE TEMPERATURES

Parameter	Nominal	Max
Ts (temperature at Ts point)	40 °C	60 °C

### PRODUCT PART NUMBER

**80397300100**

UVC – 260-270 nm

### TECHNICAL INFORMATION

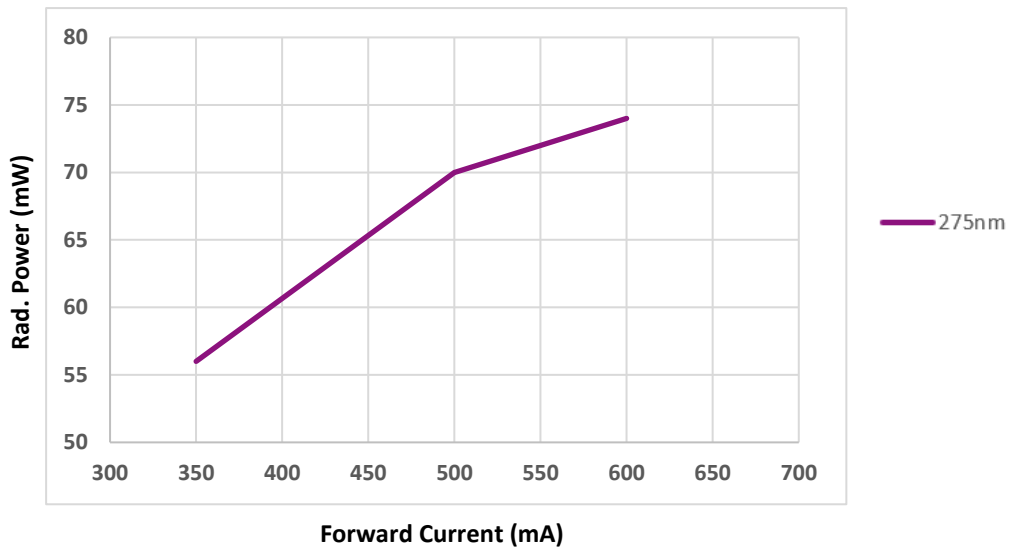
UV Type	Wavelength (nm)	#LEDs	Forward Current (mA)	Rad. Power (mW)	Forward Voltage (V)	Power (W)	Ts (°C)	EFF (%)
UVC	260-270	1	350	56.0	7.5	2.6	40	2.0
			500	70.0	8.0	4.0	40	1.8
			600	74.0	9.0	5.4	40	1.4

### LED TYPE

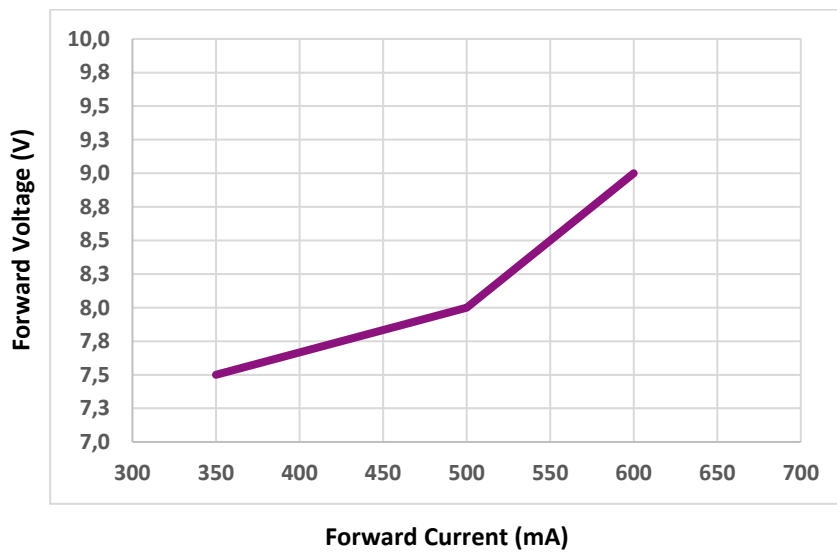
Manufacturer: Klaran

LED Series: KL265

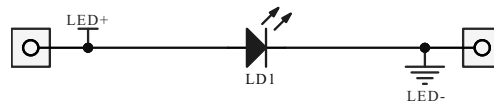
Rad. Power (mW) x Forward Current (mA) (Ts 40°C)



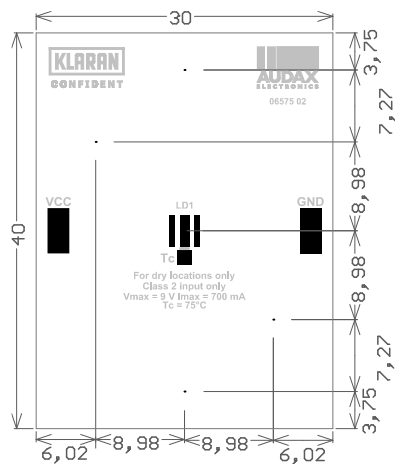
Forward Voltage (V) x Forward Current (mA) (Ts 40°C)



SCHEMATICS



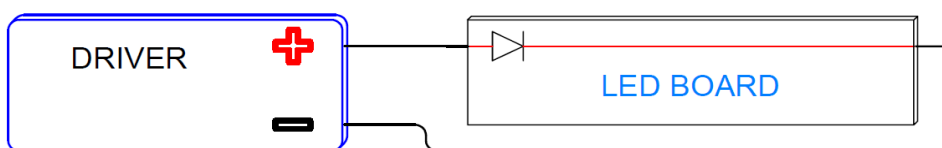
## MECHANICAL DRAWING



Units: mm

## WIRING

Specification item	Value	Unit	Condition
Input wire cross- section	0.25...0.75 18...24	mm <sup>2</sup> AWG	Solid wire
Input wire strip length	7.5...8.5	mm	Solid wire
Input wire cross-section	0.33...0.5 20...22	mm <sup>2</sup> AWG	Stranded wire
Input wire strip length	7.5...8.5	mm	Stranded wire

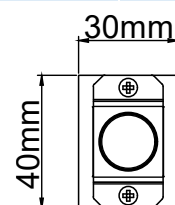


## COMPATIBLE OPTICS

Manufacturer	Part Number	Color	Beam
LEDiL	F17822_VIOLETTA-SC	Clear	~15°
LEDiL	F17826_VIOLETTA-W	Clear	~60°

## FIXING METHOD

Manufacturer	Part Number	Color
LEDiL	F18002_VIOLETTA-FRAME	Natural



VISTA SUPERIOR  
TOP VIEW



VISTA FRONTAL  
FRONT VIEW

