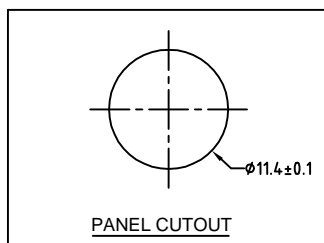
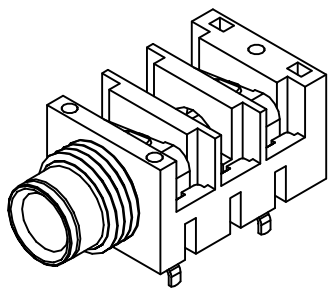
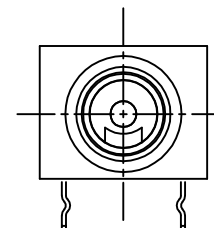
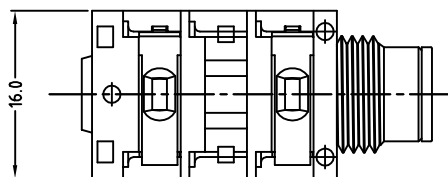
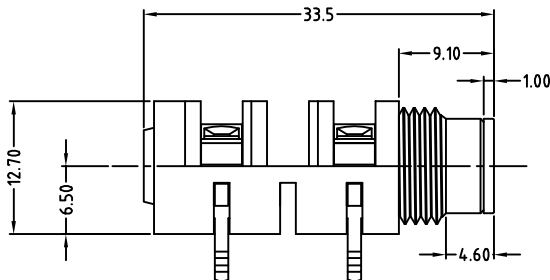
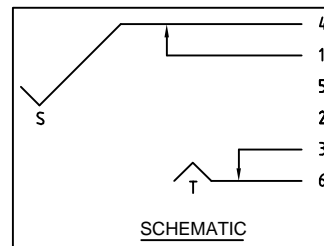


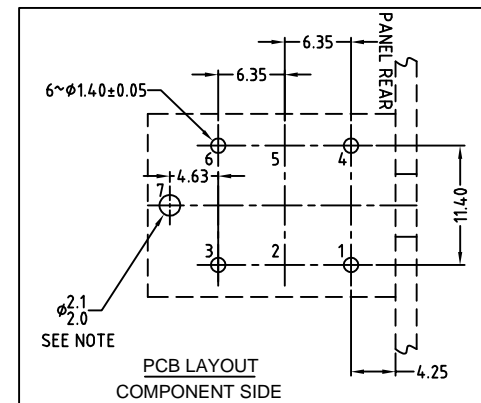
SCALE 6:1



PANEL CUTOUT



SCHEMATIC



PCB LAYOUT COMPONENT SIDE

NOTE: OPTIONAL MOUNTING HOLE FOR SELF-TAPPING M2 SCREW

UNLESS OTHERWISE SPECIFIED TOLERANCE TO BE		THIS DOCUMENT IS THE PROPERTY OF AMPHENOL AUSTRALIA PTY. LTD. NO PART THEREOF MAY BE REPRODUCED AND USED WITHOUT THE PRIOR WRITTEN CONSENT OF THE OWNER			0	FIRST ISSUE	L.V	18-06-02	----
LINEAR	ANGULAR	CAD FILE: 55010285502220	DRN: L.V	DATE: 18-06-02	REV.	CHANGE DETAILS	BY	DATE	CHG/No
X ± 0.5	X° ± 1°	MATL: REFER TO COMPONENT	CKD: M.N.H	DATE: 12-12-02	TITLE: 1/4" PHONE MONO JACK CUSTOMER DRAWING		Amphenol Amphenol Australia Pty Ltd, 2 Fireweys Blvd, Keysborough, Vic3173 DRAWING NO. SHEET		
X.X ± 0.1	X°X' ± 30'	DO NOT SCALE	FINISH: REFER TO COMPONENT	DATE: 13-12-02	SCALE: 2:1 UOS	PART No: ACJM - HHDR	SIZE: A3	55010285-502-2	2 OF 2
X.XX ± 0.05	X°X'X" ± 15'	DIMENSIONS IN MILLIMETRES		THIRD ANGLE PROJECTION					