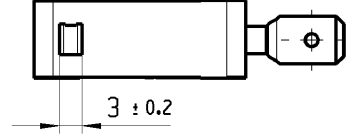
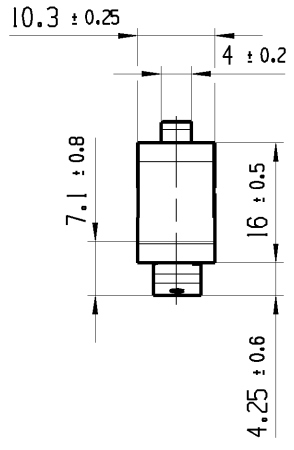
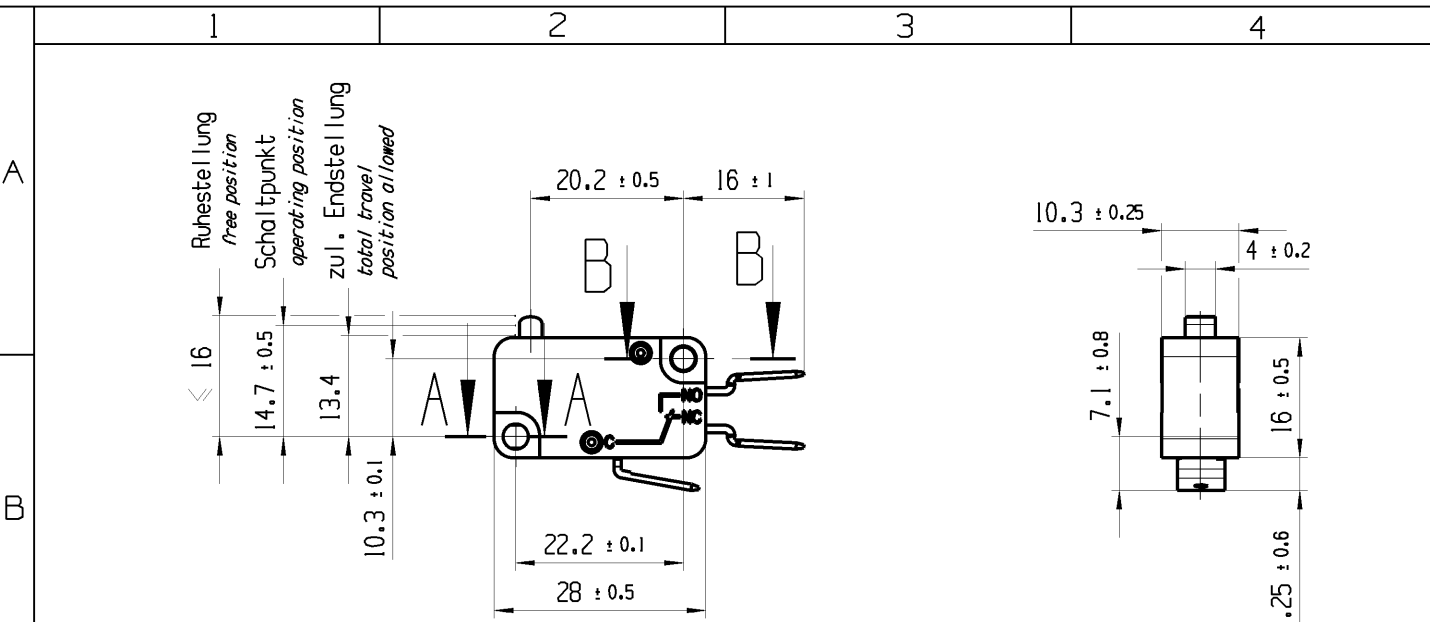


THIS DRAWING IS THE EXCLUSIVE PROPERTY OF MARQUARDT. WITHOUT THEIR CONSENT IT MAY NOT BE REPRODUCED OR GIVEN TO THIRD PARTIES.

CONFIDENTIAL

VERTRAULICH

Alle Rechte bei Marquardt, auch fuer den Fall von Schutzrechtsverletzungen. Jede Verfertigungsbefugnis, wie Kopier- und Weitergaberecht, bei uns.



Flachstecker 6.3 x 0.8
EN 61058 / EN 61210 / DIN 46244
blade terminal 6.3 x 0.8
EN 61058 / 61210 / DIN 46244

A-A
2:1

B-B
2:1

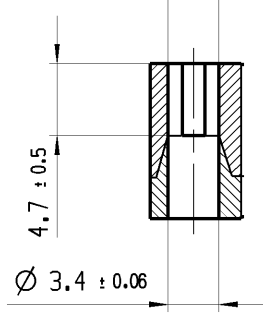
Aufschrift
marking

1005 μ T100
20(4)/400 ~ 10E3
16(4)/400 ~ 50E3
10(6)/250 ~ 50E3

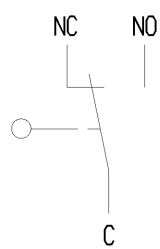
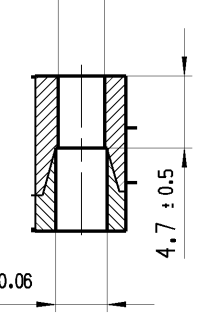
16A 125V AC 1/2HP
16A 250V AC 1/2HP
R109

Herstellort / -jahr / -woche
date code of manufacture:
place / year / week

3.35 ± 0.05 x 3.08 ± 0.06



Ø 3.08 ± 0.06



Wechsler 1-polig
single pole changeover

Schalt-Betaetigungskraft 2.4 bis 3.8 N
actuating force 2.4 to 3.8 N

Differenzweg ≤ 0.3 mm
movement differential

fuer Form und Lage FOR SHAPE AND LOC.	⊙ =	Allgemeintoleranzen UNTOLERANCED DIMENSIONS				Pause COPY	Blatt SHEET 01	TYP K	Zeichn./DRAWING NO. 10051004	Index c
	fuer Winkel FOR ANGLE ± 2	PROJEKTION	Abmasse und Nennmassbereiche Angaben in mm	Laenge LENGTH	Radien RADII					
			0-6 ± 0.1 ± 0.2	>6-15 ± 0.15 ± 0.3	>15-30 ± 0.2 ± 0.5					
			ALL DIMENSIONS ARE IN MILLIMETRES	>30-70 ± 0.3	>70-120 ± 0.4 ± 10%					
				>120 ± 0.8						
c	83050	13.06.14	BRC			CAD: NX v8.5			SCHNAPPSCHALTER snap action switch	
b	28825	08.12.99	PFU			gez./DRAWN BY 20.06.13 BCY				
a	20923	14.06.91	WA			gepr./CHECKED BY				
Ausg. ISSUE	Aenderung REVISION	gez. DRAWN BY		Ausg. ISSUE	Aenderung REVISION	gez. DRAWN BY	Ersatz fuer/REPLACEMENT OF Zg.gI.Nr.v.08.12.1999			